

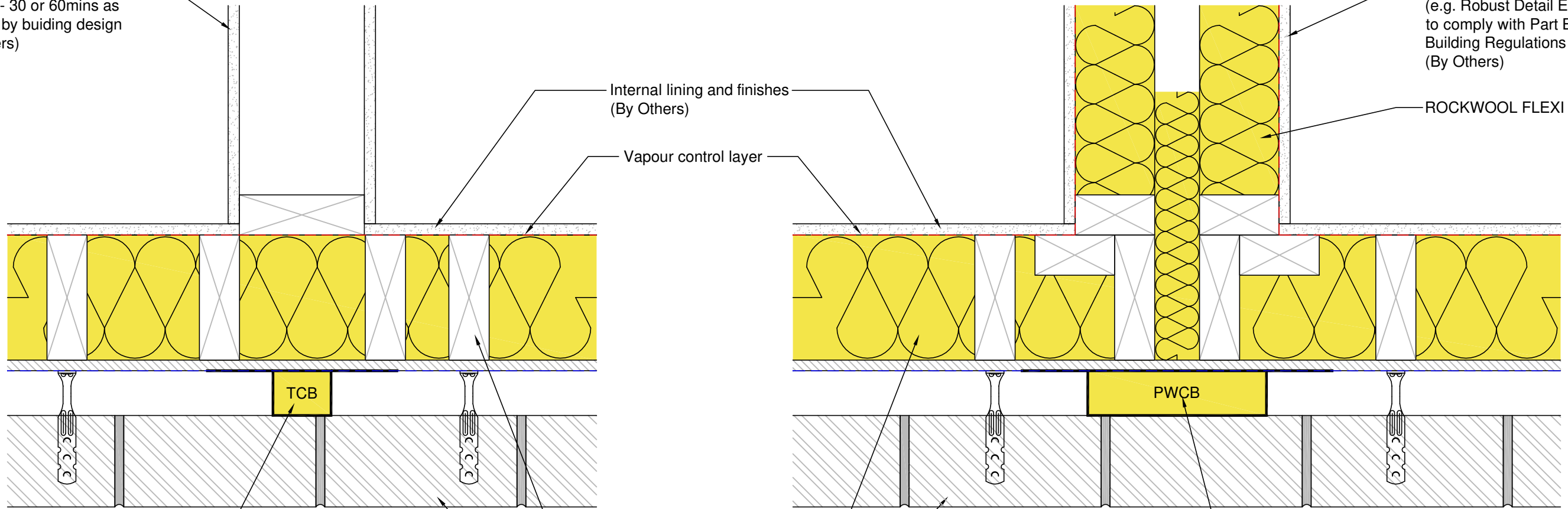
Typical fire rated wall junction - 30 or 60mins as required by building design (By Others)

Typical party wall junction (e.g. Robust Detail E-WT-1) to comply with Part E of the Building Regulations (By Others)

Internal lining and finishes (By Others)

Vapour control layer

ROCKWOOL FLEXI



ROCKWOOL TCB sized to suit insulation and integrity required by building design Refer to datasheet for size options to suit build up

Timber frame to suit structural requirements (By Others) with ROCKWOOL Timber Frame Slab fitted between studs

ROCKWOOL PWCB Sized to suit cavity width Refer to datasheet for size options (Option - Use 2 N° ROCKWOOL TCB in lieu of PWCB in line with each party stud wall)

Masonry outer leaf (Typical 103mm brickwork) (By Others)

Please refer to relevant ROCKWOOL product data sheet for further detail / specification / performance



Pencoed, Bridgend,
South Wales CF35 6NY
t: 01656 868490
technical.solutions@rockwool.co.uk

This CAD Drawing is for illustration purposes only and shall not form part of any contract with ROCKWOOL or hold any contractual force.

Usage of the information remains under the sole responsibility of the purchaser and/or user

ROCKWOOL makes no warranty, representation or guarantee regarding the information contained in the CAD Drawing, the suitability of the products for any particular purposes or the continuing production of any product. To the maximum extent permitted by applicable law, ROCKWOOL disclaims (i) any and all liability arising out of the CAD drawing, the application, use of any product, misuse or inability to use the product (ii) any and all liability, including without limitation special, consequential or incidental damages, and (iii) any and all liability of any nature resulting from the use or reliance upon the information contained in this CAD Drawing. No express or implied warranties are given other than those implied by law.

Information contained in this CAD Drawing is up-to-date as at the date of issue. As ROCKWOOL Limited cannot control or anticipate the conditions under which the information contained in this CAD Drawing may be used, each user should review the information in specific context of the planned use and must obtain approval by Building Control and/or the overseeing body for the project, who are ultimately responsible for approving the correct application/specification.

No license, express or implied, by estoppel or otherwise, to any intellectual property rights is granted by this document or by any conduct of ROCKWOOL

Title: Timber Frame Slab Cavity Wall with TCB and PWCB Cavity Barriers	
Scale: N.T.S.	Date: May 2021
Drawing Reference: RWSD-GEN-1007	Revision 1