



FIREPRO®

FIRE BARRIER SLAB

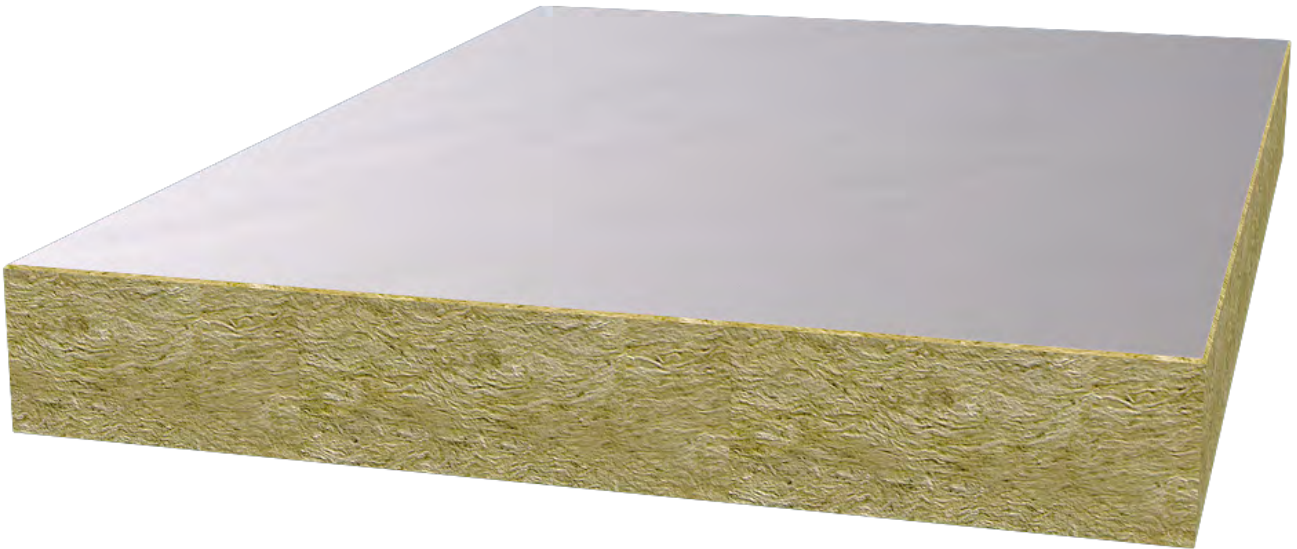
Preventing the spread of fire and inhibiting the passage of smoke in concealed spaces

ROCKWOOL Fire Barrier Slab comprises a high density stone wool core which is foil-faced on both sides. Fire Barrier Slab has been developed to prevent the spread of flames, inhibit heat and smoke through concealed spaces in buildings and improve sound reduction.

- Simple, butt-jointed and friction fit application
- No fixings, fasteners or angles required
- Suitable for closing voids of up to 1m in height and 20m in length
- Provides airborne sound reduction
- Service penetration data available
- Fire resistance of up to 4 hours integrity
- LUL approved in combination with ROCKWOOL LUL Intumescent Sealant



FIREPRO® FIRE BARRIER SLAB



APPLICATIONS

- Head of wall
- Concealed voids
- Service penetrations

FIREPRO® FIRE BARRIER SLAB

PERFORMANCE

Fire performance

Achieves 240min integrity; 60 min insulation without service penetrations. Where service penetrations are present Fire Barrier Slab can achieve 90min integrity; 60min insulation dependent on service penetration type. For further information of specific service penetration details please contact ROCKWOOL Technical Support.

Acoustic performance

ROCKWOOL Fire Barrier Slab has been tested in accordance with BS EN ISO 10140-2:2010 achieving Rw 23dB. Test Report N° C/23667/T01.

PRODUCT INFORMATION

Property	Description
Length	1000mm
Width	666mm
Thickness	100mm

STANDARDS AND APPROVALS

Certificate
Fire Barrier Slab has been independently tested and assessed to BS 476: Part 20 and Part 22 by accredited laboratories.
ROCKWOOL Fire Barrier system achieves a reaction to fire classification of A1 as defined in BS EN 13501:1
They are third party approved for performance and quality by the Loss Prevention Council Certification board (LPCB) and are listed in their Fire and Security 'Red Book' - certificate no. 022c/02.
The product has been authorised for use in LUL surface and sub-surface premises when installed in accordance with this data sheet - please refer to the LUL Approved Product Register website www.LU-apr.co.uk for specific details – LUL ref: 2231.



FIREPRO® FIRE BARRIER SLAB

INSTALLATION

1. Fire Barrier Slab should be cut to the appropriate height and friction fitted within the opening.
2. ROCKWOOL Acoustic Intumescent Sealant or ROCKWOOL LUL Intumescent Sealant should then be applied to both the butt joints and perimeter of the barrier seal.

Service penetrations

ROCKWOOL Fire Barrier Slab can be penetrated by steel pipes of ≤ 33 mm external diameters and steel cable trays of ≤ 305 mm x 50mm.

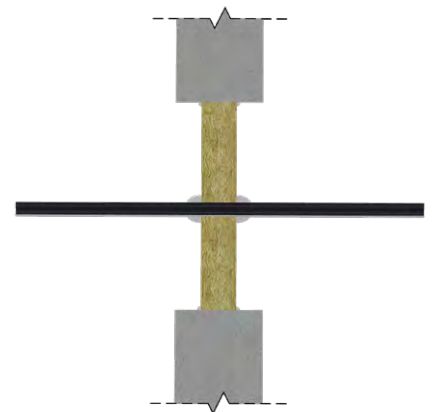
Penetrating services must be independently supported by a maximum of 150mm from the face of the slabs.

Handling

ROCKWOOL Fire Barrier Slab is easy to handle. It is easy to cut to any shape. The product should be stored indoors or under a weatherproof covering.

Maintenance

Once installed ROCKWOOL Fire Barrier Slab should need no maintenance. Fire Barrier Slab should be inspected to ensure that they have not been disturbed during maintenance of areas and/or as part of a regular maintenance program.



SPECIFICATION CLAUSES

ROCKWOOL Fire Barrier Slab is associated with the following NBS clauses:

K10 Gypsum board dry linings/partitions/ceilings

530 Cavity fire barriers within partitions/wall linings

545 Cavity fire barriers within suspended ceilings

K40 Demountable suspended ceilings

287 Cavity Barriers

425 Installing cavity barriers

431 Installing sound barriers

P10 Sundry insulation/proofing work

410 Flexible cavity barriers

430 Wired mineral wool small cavity barriers

440 Fire protection

FIREPRO® FIRE BARRIER SLAB

DISCLAIMERS

ROCKWOOL Limited, its affiliates, its agents and employees and all persons acting on its or their behalf (collectively "ROCKWOOL"), disclaim any and all liability for any errors, inaccuracies or incompleteness contained in any datasheet or in any other disclosure relating to any product. Usage of the information remains under the sole responsibility of the purchaser and/or user.

ROCKWOOL makes no warranty, representation or guarantee regarding the information contained in the data sheet, the suitability of the products for any particular purposes or the continuing production of any product. To the maximum extent permitted by applicable law, ROCKWOOL disclaims (i) any and all liability arising out of the application, use of any product, misuse or inability to use the product (ii) any and all liability, including without limitation special, consequential or incidental damages, and (iii) any and all implied warranties, including warranties of fitness for particular purpose, non-infringement and merchantability.

Information contained in this data sheet is up-to-date as at the date of issue. As ROCKWOOL Limited cannot control or anticipate the conditions under which this product may be used, each user should review the information in specific context of the planned use. To the maximum extent permitted by law, ROCKWOOL Limited will not be responsible for damages of any nature resulting from the use or reliance upon the information contained in this data sheet. No express or implied warranties are given other than those implied by law.

SUPPORTING INFORMATION

For further information relating to any aspect of the FIREPRO range, please refer to the applicable ROCKWOOL standard details at www.rockwool.com/uk or contact the ROCKWOOL technical solution team on 01656 868490 or technical.solutions@rockwool.com.

SUSTAINABILITY

As an environmentally conscious company, ROCKWOOL promotes the sustainable production and use of insulation and is committed to a continuous process of environmental improvement.

All ROCKWOOL products provide outstanding thermal protection as well as four added benefits:



Fire resistance



Acoustic comfort



Sustainable materials



Durability

HEALTH & SAFETY

The safety of ROCKWOOL stone wool is confirmed by current UK and Republic of Ireland health & safety regulations and EU directive 97/69/EC: ROCKWOOL fibres are not classified as a possible human carcinogen.

A Material Safety Data Sheet is available and can be downloaded from www.rockwool.com/uk to assist in the preparation of risk assessments, as required by the Control of Substances Hazardous to Health Regulations (COSHH).

ENVIRONMENT

Made from a renewable and plentiful naturally occurring resource, ROCKWOOL insulation saves fuel costs and energy in use and relies on trapped air for its thermal properties.

ROCKWOOL insulation does not contain (and has never contained) gases that have ozone depletion potential (ODP) or global warming potential (GWP).

ROCKWOOL is approximately 97% recyclable. For waste ROCKWOOL material that may be generated during installation or at end of life, we are happy to discuss the individual requirements of contractors and users considering returning these materials to our factory for recycling.