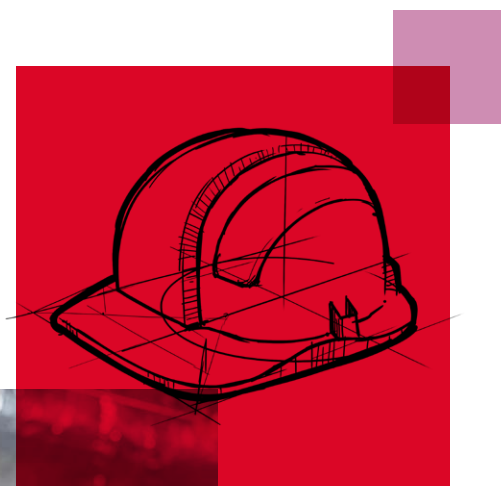


ROCKLAP PIPE SUPPORTS

Robust ROCKWOOL supports for building
services pipework



ROCKLAP PIPE SUPPORTS

ROCKLAP Pipe Supports have been designed to minimise the effects of thermal bridging from pipe suspension systems, maintaining the energy efficiency of pipework operating at temperatures of 0°C to 250°C.

ROCKLAP Pipe Supports are manufactured with non-combustible stone wool and when combined with ROCKLAP H&V Pipe Sections, form an efficient insulation solution with thermal, fire and acoustic benefits.





Advantages

- Non-combustible stone wool
- Minimises thermal bridging
- Foil faced for vapour control
- High point load resistance and effective load bearing capability

Description

ROCKLAP Pipe Supports are pre-formed sections which are manufactured from high-density ROCKWOOL stone wool. The ROCKLAP Pipe Supports are pre-cut and finished with a foil facing.

Applications

ROCKLAP Pipe Supports are suitable for use with both cold/hot steel and copper pipes operating at a temperature range of 0°C to 250°C. The ROCKLAP Pipe Supports are designed for use in pipe supports, hanger brackets and clamps, providing effective load bearing capability and point load resistance.

Product information

Property	Description
Outside diameter range	*17-210mm
Wall thickness	20-100mm
Length	**80-100mm
Reaction to fire	Non-combustible stone wool
Service temperature	Stone wool: 0-250°C Aluminium foil: ≤ 80°C
Specific heat	0.84 KJ/KgK
Water vapour resistance (μ)	> 10,000

*Other sizes may be available please contact Rockwool Technical Support for further information

**Product length varies to accommodate larger hanger support clips:

Pipe support length	OD range (mm)	Thickness range (mm)
80mm	17-135	20-80
	140-160	25-60
100mm	89-135	100
	140-160	70-100
	169-210	25-100

Installation

ROCKLAP Pipe Supports are simple to install and are available to suit a wide range of pipe diameters.

ROCKLAP Pipe Supports are supplied pre-cut. Simply place the support around the pipe and move into the location of the pipe support clip, ensuring the support is positioned centrally. (See Figure 1)

Once positioned, seal the ROCKLAP Pipe Support with the self-adhesive overlap and ensure that the joints between the pipe support and pipe insulation are securely taped with a suitable self-adhesive aluminium foil tape to maintain a continuous vapour barrier.

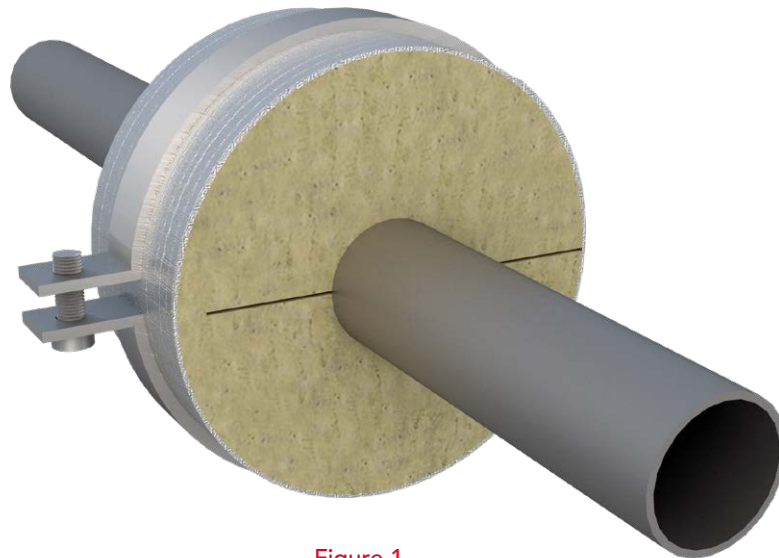


Figure 1

Maintenance

Once installed, ROCKLAP H&V Pipe Sections shouldn't require any further maintenance.

Sustainability

As an environmentally conscious company, ROCKWOOL promotes the sustainable production and use of insulation and is committed to a continuous process of environmental improvement.

All ROCKWOOL products provide outstanding thermal protection as well as four added benefits:



Fire resistance



Acoustic comfort



Sustainable materials



Durability

Health & Safety

The safety of ROCKWOOL stone wool is confirmed by current UK and Republic of Ireland health & safety regulations and EU directive 97/69/EC: ROCKWOOL fibres are not classified as a possible human carcinogen.

A Material Safety Data Sheet is available and can be downloaded from www.rockwool.co.uk to assist in the preparation of risk assessments, as required by the Control of Substances Hazardous to Health Regulations (COSHH).

Environment

Made from a renewable and plentiful naturally occurring resource, ROCKWOOL insulation saves fuel costs and energy in use and relies on trapped air for its thermal properties.

ROCKWOOL insulation does not contain (and has never contained) gases that have ozone depletion potential (ODP) or global warming potential (GWP).

ROCKWOOL is approximately 97% recyclable. For waste ROCKWOOL material that may be generated during installation or at end of life, we are happy to discuss the individual requirements of contractors and users considering returning these materials to our factory for recycling.



Interested?

For further information, contact the Technical Solutions Team on 01656 868490 or email technical.solutions@rockwool.co.uk
Visit www.rockwool.co.uk to view our complete range of products and services.

Copyright ROCKWOOL February 2018.

The ROCKWOOL Trademark

ROCKWOOL® - our trademark

The ROCKWOOL trademark was initially registered in Denmark as a logo mark back in 1936. In 1937, it was accompanied with a word mark registration; a registration which is now extended to more than 60 countries around the world.

The ROCKWOOL trademark is one of the largest assets in the ROCKWOOL Group, and thus well protected and defended by us throughout the world.

If you require permission to use the ROCKWOOL logo for your business, advertising or promotion. You must apply for a Trade Mark Usage Agreement. To apply, write to:
marketcom@rockwool.com.

Trademarks

The following are registered trademarks of the ROCKWOOL Group:

ROCKWOOL®

ROCKCLOSE®

RAINSCREEN DUO SLAB®

HARDROCK®

ROCKFLOOR®

FLEXI®

BEAMCLAD®

FIREPRO®

Disclaimer

ROCKWOOL Limited reserves the right to alter or amend the specification of products without notice as our policy is one of constant improvement. The information contained in this brochure is believed to be correct at the date of publication. Whilst ROCKWOOL will endeavour to keep its publications up to date, readers will appreciate that between publications there may be pertinent changes in the law, or other developments affecting the accuracy of the information contained in this brochure. The applications referred to within the brochure do not necessarily represent an exhaustive list of applications. ROCKWOOL Limited does not accept responsibility for the consequences of using ROCKWOOL in applications different from those described within this brochure. Expert advice should be sought where such different applications are contemplated, or where the extent of any listed application is in doubt.

© ROCKWOOL 2018. All rights reserved.

Photography and Illustrations

The product illustrations are the property of ROCKWOOL Ltd and have been created for indicative purposes only.

Unless indicated below, the photography and illustrations used in this guide are the property of ROCKWOOL Limited. We reserve all rights to the usage of these images.

If you require permission to use ROCKWOOL images, you must apply for a Usage Agreement. To apply, write to:
marketcom@rockwool.com.

July 2019

ROCKWOOL Limited

Pencoed
Bridgend
CF35 6NY

Tel: 01656 862 621

info@rockwool.co.uk

rockwool.co.uk

