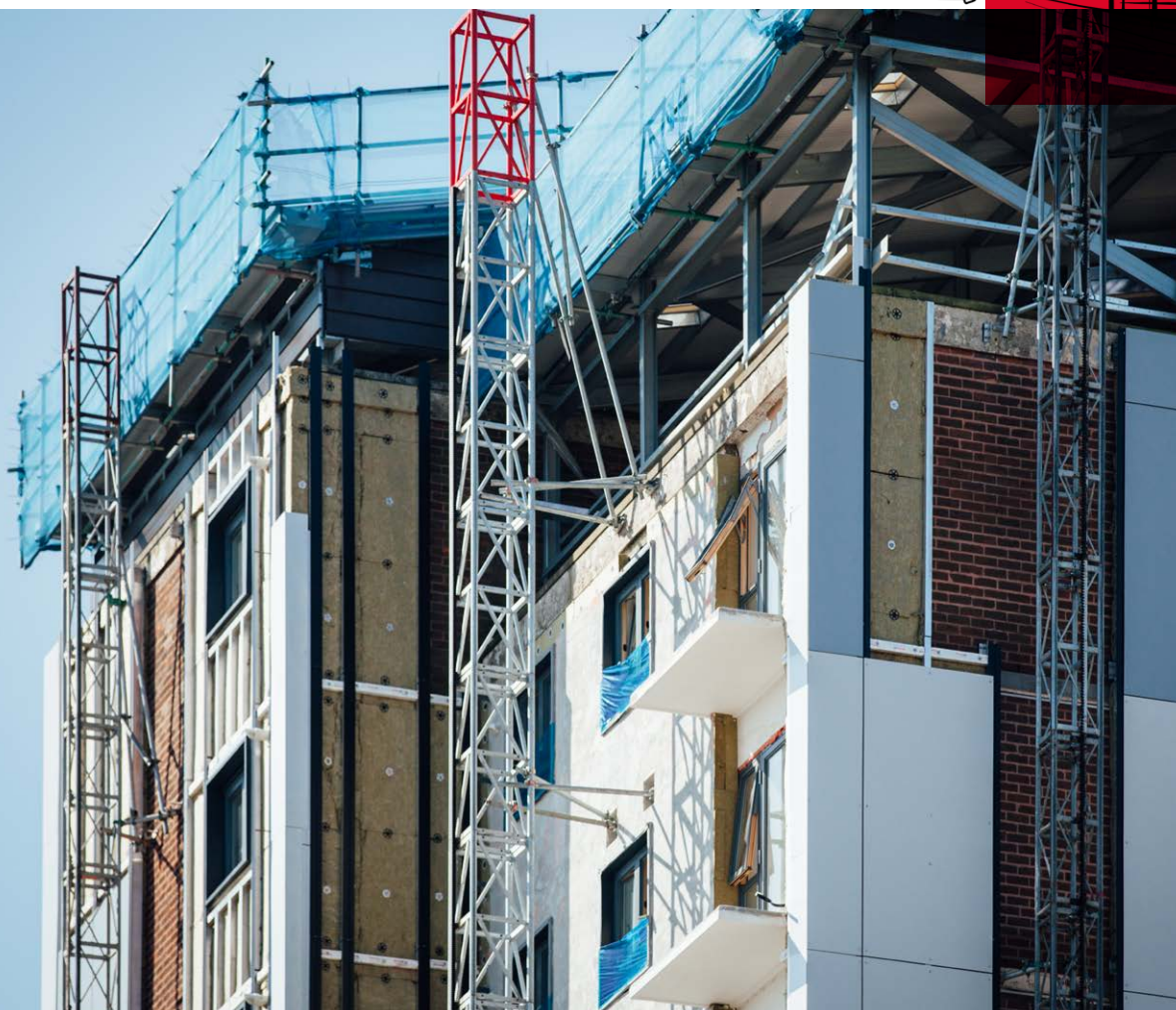


SP FIRESTOP OSCB

Open-state cavity barrier for use exclusively with
RAINSCREEN DUO SLAB



SP FIRESTOP OSCB

Consisting of an advanced intumescent strip fixed to high density non-combustible ROCKWOOL insulation, SP Firestop OSCB is designed to form an open-state cavity barrier within the building facade.

This allows the product to maintain ventilation and drainage of the cavity under normal service conditions, while in the event of a fire the intumescent strip will quickly expand outwards to seal off the cavity, preventing the passage of fire and smoke.



Advantages

- Fully tested to "ASFP Technical Guidance Document 19: Fire resistance Test for 'open-state' cavity barriers used in the external envelope or fabric of buildings"
- Up to 120 minutes fire integrity and insulation
- Provides 25mm or 44mm airspace
- Satisfies NHBC and CWCT guidance for ventilation gaps at cavity barrier locations
- Weather resistant
- Easy site storage and handling
- Combined with ROCKWOOL RAINSCREEN DUO SLAB it simplifies the design of high rise buildings above 18m

Description

Exclusively designed and tested for use only in conjunction with ROCKWOOL RAINSCREEN DUO SLAB, SP Firestop OSCB forms an open-state cavity barrier within the building facade, which allows for ventilation and drainage of the cavity under service conditions.

The product comprises of a continuous intumescent strip fixed to the leading edge of a foil faced stone wool barrier, encapsulated by a weather-resistant polythene sleeve.

Fully tested to ASFP TGD 19, the combination of non-combustible insulation with effective intumescent, supports the construction of safe façade systems and aids the design of high-rise buildings over 18m in height.

Installed horizontally and designed to ensure an appropriate open air space is maintained, the SP Firestop OSCB is suitable for cavity widths up to 600mm (see under 'Performance' for full details).

Applications

SP Firestop OSCB is suitable for use within ventilated façade systems.

Performance

Please note that SP Firestop OSCB must be specified at least 6mm thicker than the total thickness of RAINSCREEN DUO SLAB within in the cavity.

SP Firestop OSCB	Polythene wrap	Maximum dimensions (mm)		Fire performance (minutes)	
		Overall void	Open cavity	Integrity	Insulation
25	White; red text	600	25	120	120
44	Red; white text	425	44	120	120

- SP Firestop OSCB 25 achieves up to 120 minutes, with a maximum open cavity of 25mm and maximum overall void of 600mm.
- SP Firestop OSCB 44 achieves up to 120 minutes, with a maximum open cavity of 44mm and maximum overall void of 425mm.

Technical information

Standards & approvals

Fully tested to ASFP TGD 19, SP Firestop OSCB can comply with the following building regulations:

- England and Wales — Approved Document B
- Scotland—Technical Handbook Section 2
- Northern Ireland—Technical Booklet E
- Republic of Ireland—Technical Guidance Document B

Dimensions

Length: 1000mm
Thickness: 90mm

Total cavity size (mm)	Rainscreen Duo Slab (mm)	SP Firestop OSCB 25		SP Firestop OSCB 44	
		Product width (mm)	Open cavity (mm)	Product width (mm)	Open cavity (mm)
100	50	75	25	56	44
110	60	85	25	66	44
120	70	95	25	76	44
125	75	100	25	81	44
130	80	105	25	86	44
140	90	115	25	96	44
150	100	125	25	106	44
160	110	135	25	116	44
170	120	145	25	126	44
175	125	150	25	131	44
180	130	155	25	136	44
190	140	165	25	146	44
200	150	175	25	156	44
210	160	185	25	166	44
220	170	195	25	176	44
230	180	205	25	186	44
240	190	215	25	196	44
250	200	225	25	206	44
260	210	235	25	216	44
270	220	245	25	226	44
275	225	250	25	231	44
280	230	255	25	236	44
290	240*	265	25	246	44
300	250*	275	25	256	44
310	260*	285	25	266	44
320	270*	295	25	276	44
330	280*	305	25	286	44
340	290*	315	25	296	44
350	300*	325	25	306	44
360	310*	335	25	316	44
370	320*	345	25	326	44
380	330*	355	25	336	44
390	340*	365	25	346	44
400	350*	375	25	356	44
410	360*	385	25	366	44
420	370*	395	25	376	44
425	375*	400	25	381	44

*Thicknesses of RAINSCREEN DUO SLAB over 230mm comprise two layers.
Larger sizes available as per the table under 'Performance'. Please contact Customer Service to order.



Ancillary products

SP Firestop OSCB Fixing Brackets

Required for installation, these galvanised steel brackets are supplied with SP Firestop OSCB at a rate of two per metre length. Brackets are packaged in a separate cardboard box located at the bottom of a pallet - the location will be marked with a label.

SP Fixing Brackets are designed to be easily re-profiled by hand on site, and should be cut as necessary to ensure they penetrate the barrier by at least 50% of its width.

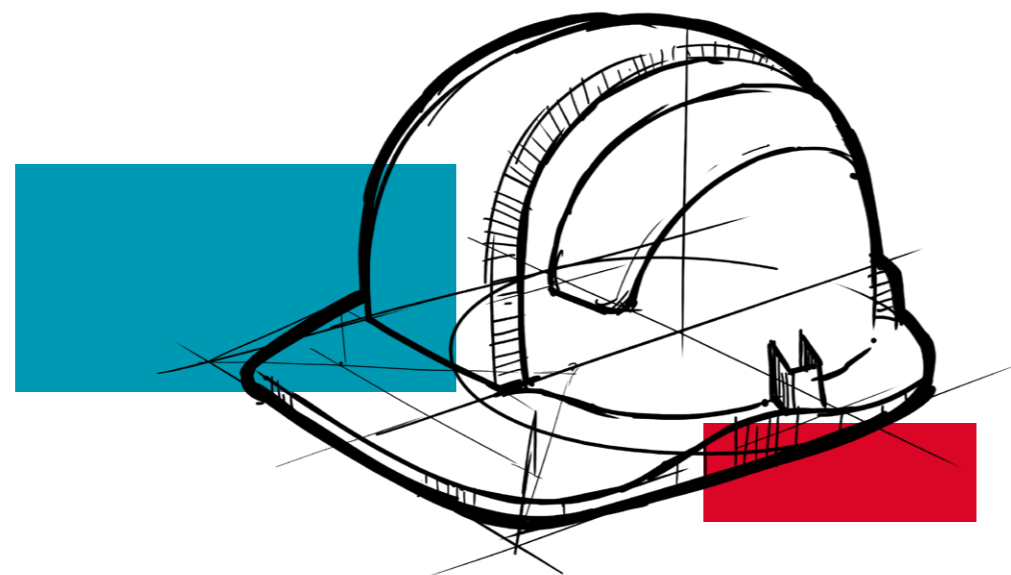
Stainless steel brackets are available as an option.



Pigtail Screws

These are required for SP Firestop OSCB 25, and are used to secure the front-facing intumescent strip. They are supplied at a rate of 3 per metre length and will be packaged with the SP Firestop fixing brackets.

Care should be taken to ensure that the pigtail screws protrude from the front face of the firestop by a maximum of 25mm.



Installation

SP Firestop OSCB is only tested and certified for horizontal applications in conjunction with RAINSCREEN DUO SLAB®.

Note that the polythene wrap covering each section of barrier is not to be removed, and if cut must be reinstated.

SP Firestop OSCB is supplied ready to install with two galvanised steel fixing brackets and four pigtail screws per meter length.

The brackets should be mechanically and securely fixed to the wall at a maximum of 500mm centres using non-combustible fixings.

The product is impaled mid-barrier depth onto the fixing brackets, which should penetrate the barrier by at least half of the product width. The barrier must be pushed back sufficiently to ensure full contact with the supporting wall.

For SP Firestop OSCB 25 only, the front facing intumescent strip is secured to the barrier using the supplied pigtail screws, three per metre length at a maximum of 333mm centres. These screws should protrude from the front face of the barrier by a maximum of 25mm.

SP Firestop OSCB 44 should oversail the front face of the insulation, protruding into the cavity by at least 6mm.

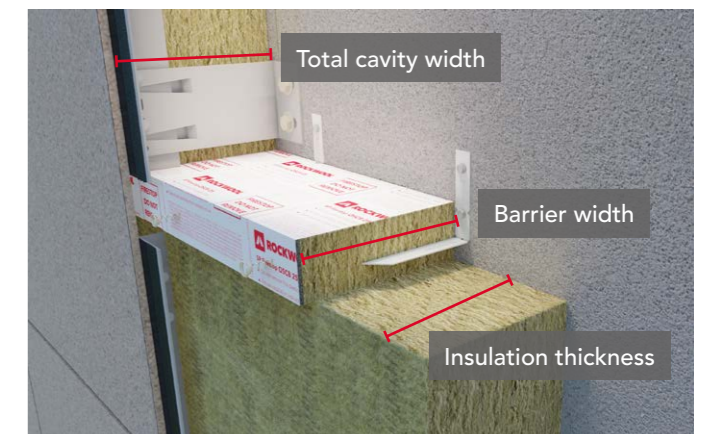
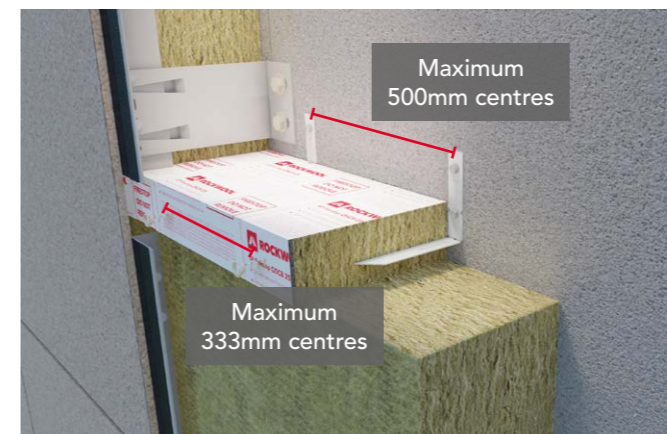
Adjacent lengths of barrier should be tightly butt jointed together.

At a corner detail where two runs of OSCB meet (for clarity; referred to as A and B): A should be continued out past the corner to tightly butt against the outer cladding, and B should tightly butt against A.

Where OSCB meets a vertical firestop, OSCB should be stopped and tightly butted against it.

For cut lengths, a minimum of two fixing brackets should be used.

Imperfections of up to 10mm can be filled with ROCKWOOL Acoustic Intumescent Sealant.



Sustainability

As an environmentally conscious company, ROCKWOOL promotes the sustainable production and use of insulation and is committed to a continuous process of environmental improvement.

All ROCKWOOL products provide outstanding thermal protection as well as four added benefits:

-  **Fire resistance**
-  **Acoustic comfort**
-  **Sustainable materials**
-  **Durability**

Health & Safety

The safety of ROCKWOOL stone wool is confirmed by current UK and Republic of Ireland health & safety regulations and EU directive 97/69/EC: ROCKWOOL fibres are not classified as a possible human carcinogen.

A Material Safety Data Sheet is available and can be downloaded from www.rockwool.co.uk to assist in the preparation of risk assessments, as required by the Control of Substances Hazardous to Health Regulations (COSHH).

Environment

Made from a renewable and plentiful naturally occurring resource, ROCKWOOL insulation saves fuel costs and energy in use and relies on trapped air for its thermal properties.

ROCKWOOL insulation does not contain (and has never contained) gases that have ozone depletion potential (ODP) or global warming potential (GWP).

ROCKWOOL is approximately 97% recyclable. For waste ROCKWOOL material that may be generated during installation or at end of life, we are happy to discuss the individual requirements of contractors and users considering returning these materials to our factory for recycling.



The ROCKWOOL Trademark

ROCKWOOL® - our trademark

The ROCKWOOL trademark was initially registered in Denmark as a logo mark back in 1936. In 1937, it was accompanied with a word mark registration; a registration which is now extended to more than 60 countries around the world.

The ROCKWOOL trademark is one of the largest assets in the ROCKWOOL Group, and thus well protected and defended by us throughout the world.

If you require permission to use the ROCKWOOL logo for your business, advertising or promotion. You must apply for a Trade Mark Usage Agreement. To apply, write to: marketcom@rockwool.com.

Trademarks

The following are registered trademarks of the ROCKWOOL Group:

- ROCKWOOL®
- ROCKCLOSE®
- RAINSCREEN DUO SLAB®
- HARDROCK®
- ROCKFLOOR®
- FLEXI®
- BEAMCLAD®
- FIREPRO®

Disclaimer

ROCKWOOL Limited reserves the right to alter or amend the specification of products without notice as our policy is one of constant improvement. The information contained in this brochure is believed to be correct at the date of publication. Whilst ROCKWOOL will endeavour to keep its publications up to date, readers will appreciate that between publications there may be pertinent changes in the law, or other developments affecting the accuracy of the information contained in this brochure. The applications referred to within the brochure do not necessarily represent an exhaustive list of applications. ROCKWOOL Limited does not accept responsibility for the consequences of using ROCKWOOL in applications different from those described within this brochure. Expert advice should be sought where such different applications are contemplated, or where the extent of any listed application is in doubt.

© ROCKWOOL 2018. All rights reserved.

Photography and Illustrations

The product illustrations are the property of ROCKWOOL Ltd and have been created for indicative purposes only.

Unless indicated below, the photography and illustrations used in this guide are the property of ROCKWOOL Limited. We reserve all rights to the usage of these images.

If you require permission to use ROCKWOOL images, you must apply for a Usage Agreement. To apply, write to: marketcom@rockwool.com.

Interested?

For further information, contact the Technical Solutions Team on 01656 868490 or email technical.solutions@rockwool.co.uk

Visit www.rockwool.co.uk to view our complete range of products and services.

Copyright ROCKWOOL September 2018.

Notes

Notes

March 2021

ROCKWOOL Limited

Pencoed
Bridgend
CF35 6NY

Tel: 01656 862 621

info@rockwool.co.uk

rockwool.co.uk

