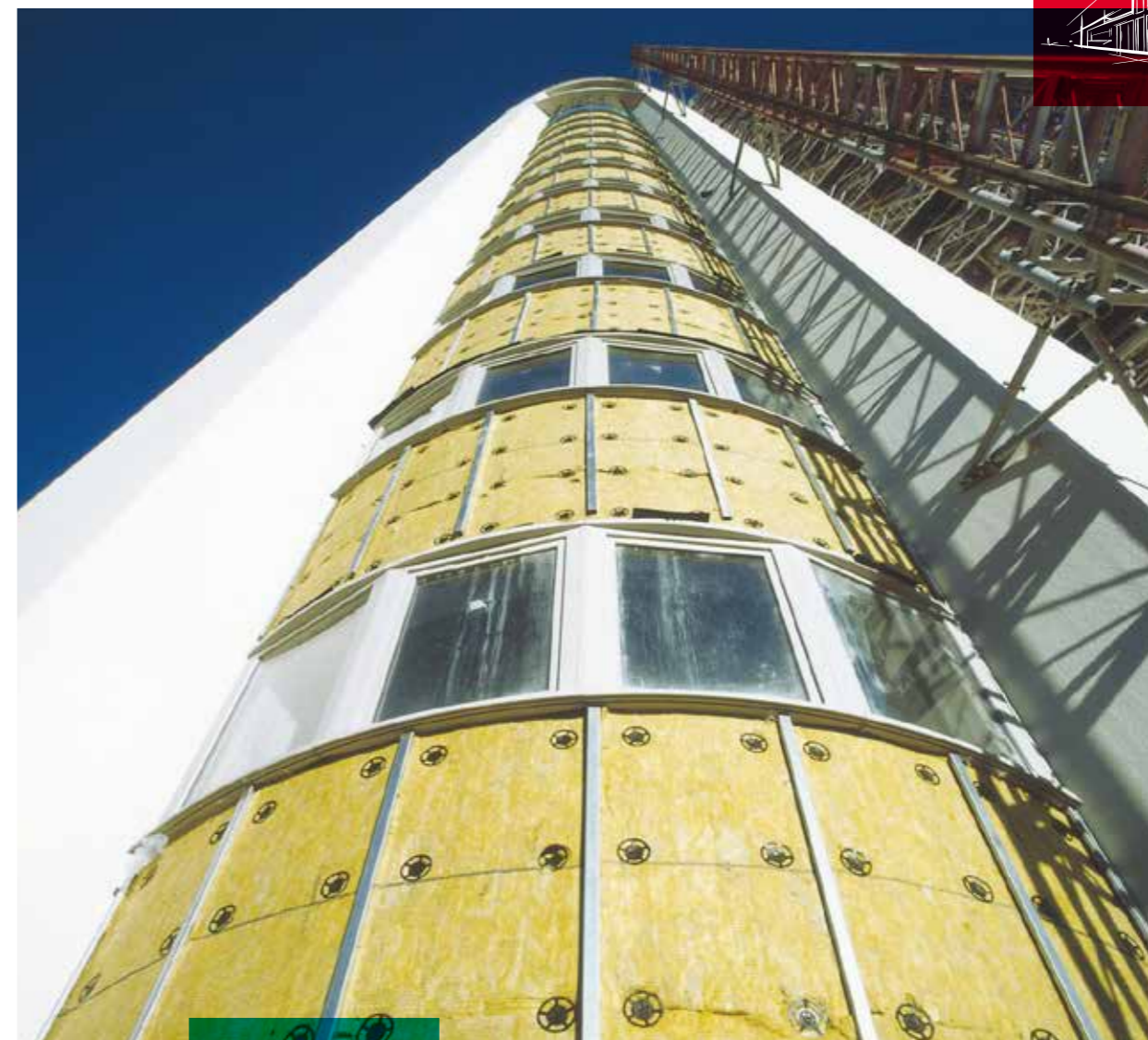


ROCKWOOL® is the registered trademark of ROCKWOOL Group.



ROCKWOOL VentRock DD



ROCKWOOL CHINA

Factory:

Guangzhou

No.3 Taihua Street, Yonghe District, Guangzhou Economic And Technological Development Zone, Guangdong Province (511356)
Tel: (+86) 20 8298 6668 Fax: (+86) 20 8298 6877

Yangzhou

No.5, 4th Keyan Rd, Yizheng Econ & Tech Development Zone, Jiangsu Province (211400)
Tel: 0514-89189988

Beijing

Tel: (+86) 10 6590 6077

Shanghai

Tel: (+86) 21 6211 6725

Guangzhou

Tel: (+86) 20 3839 3636
Fax: (+86) 20 3839 3637

Hong Kong

Tel: (+852) 2754 0877

Taiwan

Tel: (+886) 4 2253 6866

Philippine

Tel: (+63) 2 7710 650
Fax: (+63) 2 7710 649

ROCKWOOL China Hotline: 400 665 0505

RW-CNVRDD-BRO/02-2020/4/EN



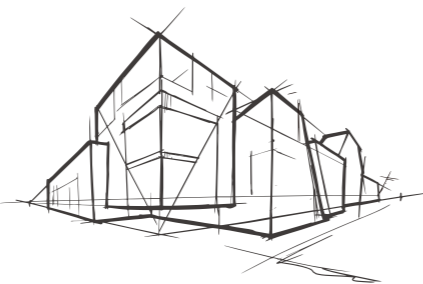
www.rockwool.com.cn ROCKWOOL Wechat

ROCKWOOL Group

We are the world leading stone wool manufacturer, with innovative products and systems, committed to protecting the environment and improving people's life.

ROCKWOOL Group is a global leader in thermal insulation, providing world-class products and solutions to building structures. Our products help secure fire safety and reduce energy consumption of buildings, coupled with excellent performance in sound absorption, noise reduction and indoor comfort. ROCKWOOL provides green solutions for the horticulture industry, special engineered stone wool fiber for the manufacturing industry, as well as effective insulation solutions for refining and processing industries, marine and offshore industries and other areas. We also have acoustic and vibration reduction system for modern infrastructure construction.

ROCKWOOL Group has a major market share in Europe, but we have also actively expanded our market in Russia, North America, India and East Asia, with more production, sales and service activities operating locally. ROCKWOOL Group's global network helps promote our products and systems around the world.



In China, ROCKWOOL provides a wide range of products for building insulation and other industrial areas that cater to different applications. We have more than 20 years of exploration and operation in China. ROCKWOOL stone wool is integrated with several excellent strengths: fire resilience, thermal properties, acoustic capabilities, durability and sustainability etc. Our products can stand the test of time. They protect buildings and people in any environment while reducing the carbon footprint. ROCKWOOL protects the environment and makes our society develop with a more sustainable approach.

ROCKWOOL China has an annual stone wool production capacity of 110,000 tons in Guangzhou and Yangzhou, and subsidiaries located in Beijing, Guangzhou, Hong Kong, Taiwan, Philippines and other major cities at present.

46

Manufacturing facilities

100+

Countries sales coverage

11,000+

Employees globally

80 – 1,500 times

Ratio between energy saved during product life against energy used for production per unit is 80-1,500 times



ROCKWOOL VentRock DD

Introduction

VentRock DD is an innovation insulation solution provided by ROCKWOOL. The product is made from natural rocks such as basalt and limestone. The rocks are melted in a cupola at temperature of higher than 1450°C, and the molten lava is fiberized by a spinner. The inorganic fibres are bonded together using a thermosetting resin to form the final product which is cut into suitable size for easy handling and installation. Comparing with common stone wool slab used in ventilated façade or non-transparent curtain wall system, VentRock DD features lower density, higher mechanical strength, and easier installation. It is an ideal combination of good thermal performance, fire resistance, acoustic, durability and sustainability.



Application

VentRock DD is an ideal insulation material for ventilated façade or non-transparent curtain wall system of residential, commercial, and industrial constructions.

Fire spreads rapidly once it breaks out due to the chimney effect in curtain wall system, so the fire safety of curtain wall is extremely important. VentRock DD has excellent performance in fire resistance, with a wide range of great features such as remarkable strength, high water repellence, and low thermal conductivity. VR-DD is an ideal insulation for curtain walls.

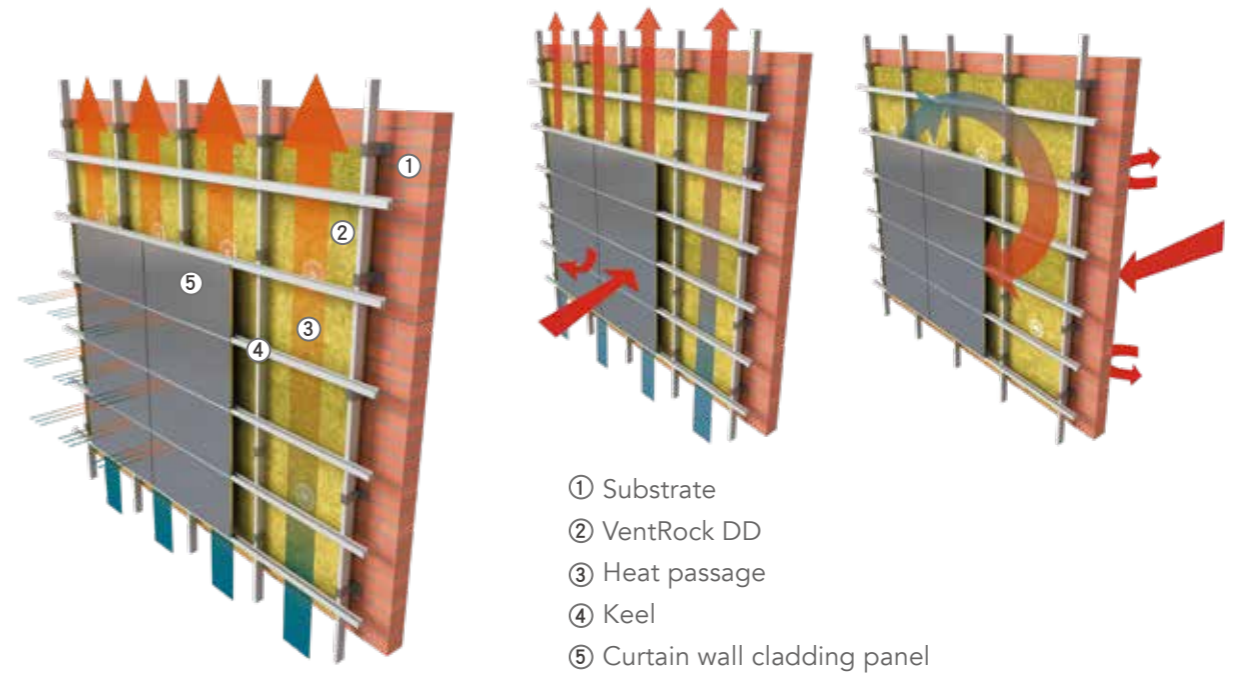


It is an ideal combination of good thermal performance, fire resistance, acoustic, durability and sustainability.



Typical Structure

A curtain wall system is an outer covering of building that consists of cladding panels and supporting structure. It is subjected to an imposed displacement of the supports in the plane of the wall, and curtain wall itself does not carry any load from the main structure. It consists of substrate, supporting structure, insulation layer, anchor fixing and other parts. The curtain wall system can be applied with ROCKWOOL VR-DD which has multiple benefits, e.g. light in weight, easy construction, noise isolation, rainproof, wind pressure resistance and thermal insulation.



- ① Substrate
- ② VentRock DD
- ③ Heat passage
- ④ Keel
- ⑤ Curtain wall cladding panel

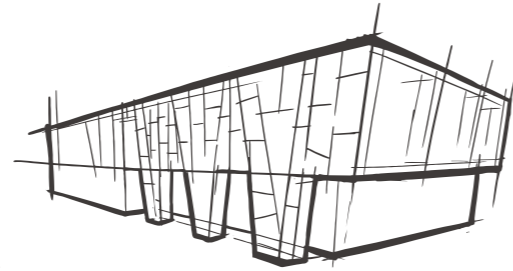
Technical Parameters

Item	Unit	VR-DD	Standard
Nominal density	kg/m ³	≤65	GB/T 5480
Fire performance	-	A (A1)	GB 8624
Thermal conductivity	W/ (m·k)	≤0.036	GB/T 10295
Tensile strength of top layer	kPa	≥2.5	GB/T 25975
Acidity ratio	-	≥1.8	GB/T 1549
Water repellence	%	≥99.5	GB/T 19686
Shot content (shot size>0.25mm)	%	≤5	GB/T 25975
Short term water absorption (Partial immersion, 24h)	kg/m ²	≤0.25	GB/T 25975
Long term water absorption (Partial immersion, 28d)	kg/m ²	≤0.5	GB/T 25975
Moisture absorption	%	≤0.5	GB/T 19686

Benefits

Comparing with traditional stone wool slab (80kg/m³-100kg/m³) used in curtain wall system:

- Product weight reduced by more than 15%, resulting in weight reduction of the whole curtain wall system, easier to transport, handle and install;
- Higher top layer tensile strength, better wind load resistant performance;
- Higher overall mechanical strength, less wastage during installation;
- More flexible bottom layer allows easier flattening during installation;
- Class A1 non-combustible material, melting point above 1000°C;
- Good acoustic performance and noise reduction;
- Does not contain asbestos, non-hazardous to health;
- Does not release toxic smoke, safe to use;
- Good dimensional stability, strong resistance to shrinkage at temperature encountered in fire conditions;
- Excellent air permeability, no corrosion to metal and components within the structure;
- Physically and chemically stable;
- No foaming agent and fire retardant during production process, contribute to sustainability of the environment.

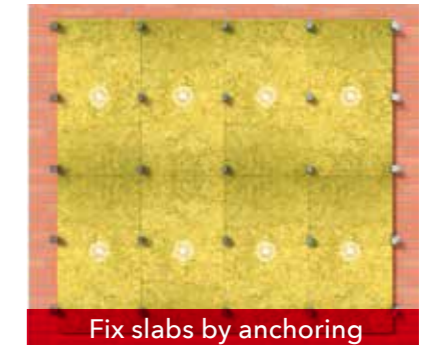
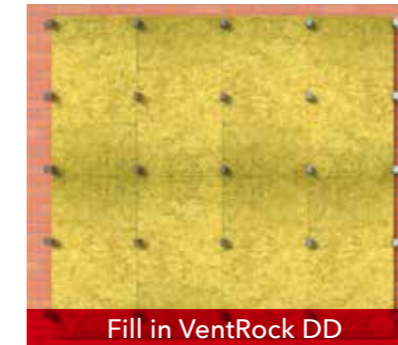
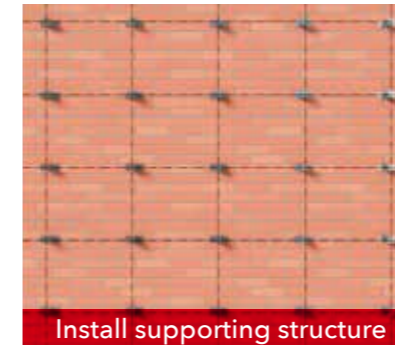


Product Range

Product code	Thickness (mm)	Size (mm)
VR-DD	50-150	1200×600



Installation



Remind when starting design and construction

- VentRock DD has two sides with different mechanical strength, a ROCKWOOL mark is placed on the side with higher strength for ease of identification. When installing the product, the marked side must be facing towards the outside;
- Avoid using small size slab when installing VentRock DD. Each slab shall be fixed closely to adjacent ones, and in such a way that gaps are staggered between rows and columns;
- Cutting should be done by sharp tools like knife or panel saw;
- Requirements of the design drawing, regulations and other applicable standards shall be complied.

Packaging and Storage

- ROCKWOOL VentRock DD is shrink-wrapped in polyethylene sheets for ease of handling, transportation, storage and identification.
- Do not expose directly to water during transportation to prevent damage to products;
- VentRock DD should be stored in a ventilated indoor space or in an open area covered with a tarpaulin.

