

ROCKWOOL Conlit H for Passive Fire Protection Systems

ROCKWOOL stone wool products are
mainly made of natural stone.



ROCKWOOL Conlit H

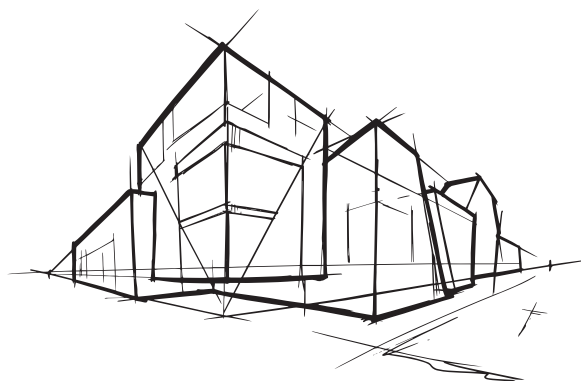
Conlit H series is designated to be used by passive fire protection system. They are manufactured from long fine fibers, spun from molten natural rock, bonded with thermosetting resin. Its unique formulated contents in the product ensure the stability of the fibers structures and provide a rigid surface when exposed directly to heat during a fire. The product has absolutely remarkable resistance to shrinkage at temperature encountered in fire conditions. The product is easy to cut and tight-fit into openings for varieties of fire resistant applications and structures.

Conlit H stone wool board is dark in color. Conlit H products available are: CL- H80 CL- H110 CL- H128

Applications

Conlit H series is widely used as passive fire protection barrier or as component in passive fire proof system to withstand fire exposure for a longer period during fire. The applications include spandrel wall, fire partition, fire ceiling, seal at all openings and gaps etc.

The past research and development of fire test results of similar product type has shown the ability of the bare product to achieve the fire integrity and insulation criteria of up to two hours with a recorded unexposed surface temperature of less than 180°C when tested in accordance to BS476 Part 20 standards.

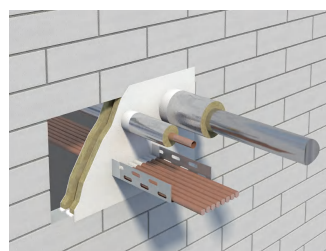


Facing

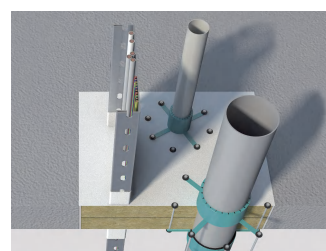
CL-H standard products are available in plain. It can be faced with aluminum foil upon request. Please contact local representative for detail information.

Packaging and Storage

CL-H product is shrink-wrapped in polyethylene sheets for ease of handling, transportation, storage and identification. Products should be stored indoors or under a waterproof covering.



Wall penetration seal



Floor penetration seal

Technical Parameters

	CL-H80	CL-H110	CL-H128	Standards
Nominal density	80kg/m ³	110kg/m ³	128kg/m ³	GB/T 19686
Thickness	50mm, 75mm, 100mm			GB/T 19686
Dimension	1200mm x 600mm			GB/T 19686
Burning behavior	Non-combustible, reaction to fire Class A1			GB8624; EN13501-1
Fire performance	Flame spread 0, Smoke develop 0			ASTM E84
Thermal conductivity at 25°C	0.034W/mK			GB/T 10295; ASTM C518
Water absorption (partial immersion)	≤0.5kg/m ² non-hygroscopic and non-capillary			GB/T 16401; EN1609:97
Water vapor absorption	Absorb < 0.04%Vol			GB/T 5480; ASTM C1104/1104M
Odor emission	No perceptible present			ASTM C665-06
Fungi resistance	Does not encourage growth of fungi			ASTM 1338
Heat shrinkage rate	<2%, (650°C)			ASTM C356

Note: The information contained in this data sheet is believed to be correct at the date of publication. ROCKWOOL Company does not accept responsibility for the consequences of using CL-H in applications different from those described above.

ROCKWOOL

Factory: No.1, Chuangkang Rd, Guangfo Industrial Park, Fogang County, Qingyuan, Guangdong, P.R.C. (511675)

No.5, 4th Keyan Rd, Yizheng Econ & Tech Development Zone, Jiangsu Province (211400)

ROCKWOOL China Hotline: 400 665 0505

Beijing: (+86) 10 6590 6077

Shanghai: (+86) 21 6211 6725

Guangzhou: (+86) 20 3839 3636

Hong Kong: (+852) 2754 0877

Taiwan: (+886) 4 2253 6866

Philippines: (+63) 2 7710 650

www.rockwool.com.cn



Official WeChat