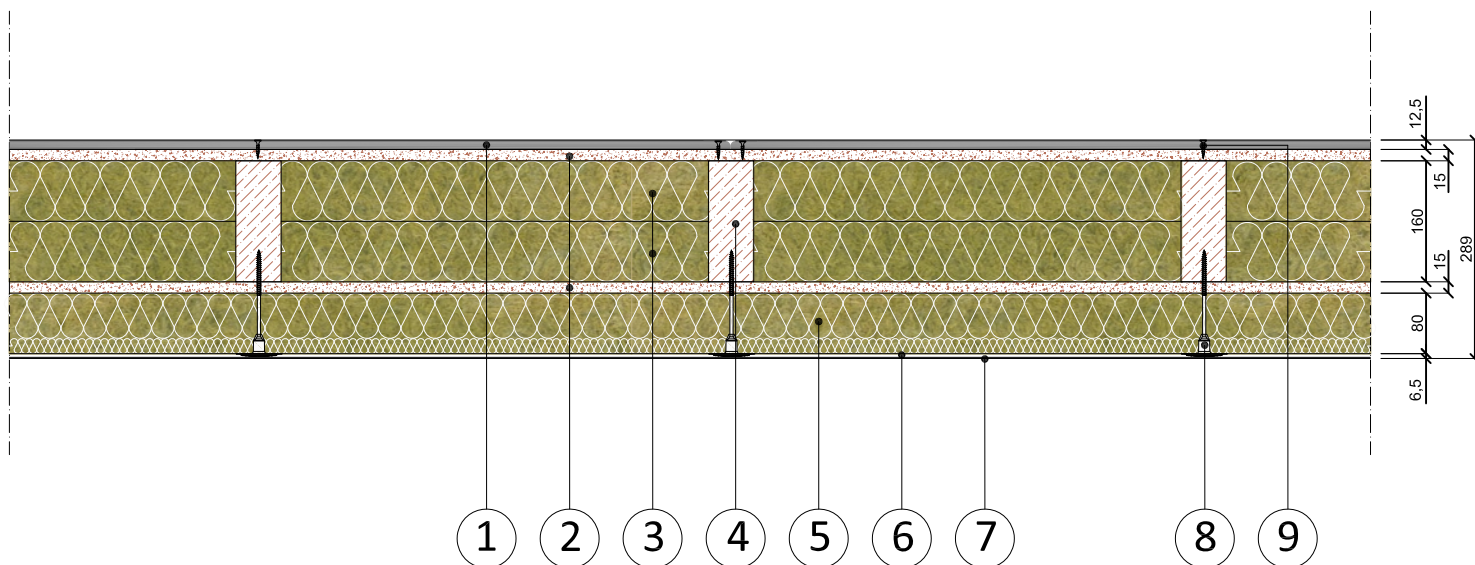


Cappotto REDArt su supporto in legno timber frame $R_w=55,9$ dB sp. 289 mm

$R_w (C, C_{tr}) = 55,9 (-3, -9)$ dB



N.	Descrizione	Description
1	Lastra in gessofibra FERMACELL, sp. 12.5 mm	Fermacell gypsum plasterboard, th. 12,5 mm
2	Pannelli in OSB, sp. 15 mm	OSB panel, th. 15 mm
3	Pannelli in lana di roccia ROCKWOOL Timberock, sp. 80 mm	ROCKWOOL Timberock stonewool panel, th. 80 mm
4	Montanti in legno d'abete, dim. 160 x 80 mm	Timber studs, 160x80 mm
5	Pannelli ROCKWOOL Frontrock Max Plus, sp. 80 mm	ROCKWOOL Frontrock Max Plus stonewool panel, th. 80 mm
6	Rasante ROCKWOOL REDArt armato con rete, sp. 5 mm	ROCKWOOL REDArt Base Coat with reinforcing mesh
7	Finitura Siliconica ROCKWOOL REDArt, sp. 1.5 mm	ROCKWOOL REDArt Silicone Top coat, th 1,5 mm
8	Fissaggio meccanico del pannello isolante	Insulation panel screw fasteners
9	Viti fosfatate autofilettanti	Self tapping screws

Riferimento:

WOODETICS007

Numero certificato:

117-2016-IAP