

FIREPRO Acoustic Intumescent Sealant

Minimum 75mm sand cement screed or suitable reinforced specialist screed (By Others)

Suitable separation layer

Thermal ROCKFLOOR (Thickness to suit required u-value)

Suitable damp proof membrane (DPM)

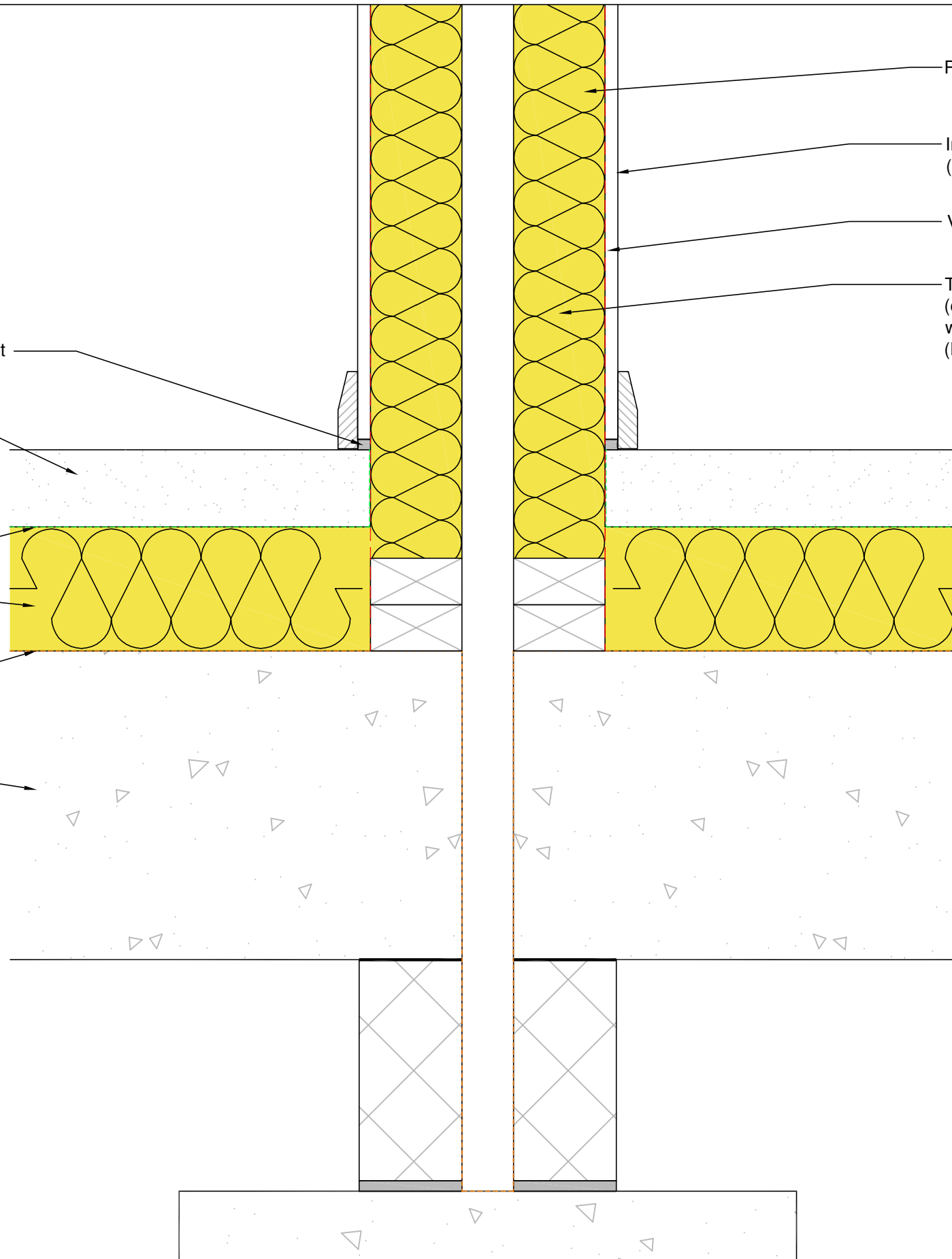
Typical ground floor slab and foundation detail (By Others)

ROCKWOOL FLEXI

Internal lining and finishes (By Others)

Vapour control layer

Typical party wall junction (e.g. Robust Detail E-WT-1) to comply with Part E of the Building Regulations (By Others)



Please refer to relevant ROCKWOOL product data sheet for further detail / specification / performance

This CAD Drawing is for illustration purposes only and shall not form part of any contract with ROCKWOOL or hold any contractual force.

Usage of the information remains under the sole responsibility of the purchaser and/or user

ROCKWOOL makes no warranty, representation or guarantee regarding the information contained in the CAD Drawing, the suitability of the products for any particular purposes or the continuing production of any product. To the maximum extent permitted by applicable law, ROCKWOOL disclaims (i) any and all liability arising out of the CAD drawing, the application, use of any product, misuse or inability to use the product (ii) any and all liability, including without limitation special, consequential or incidental damages, and (iii) any and all liability of any nature resulting from the use or reliance upon the information contained in this CAD Drawing. No express or implied warranties are given other than those implied by law.

Information contained in this CAD Drawing is up-to-date as at the date of issue. As ROCKWOOL Limited cannot control or anticipate the conditions under which the information contained in this CAD Drawing may be used, each user should review the information in specific context of the planned use and must obtain approval by Building Control and/or the overseeing body for the project, who are ultimately responsible for approving the correct application/specification.

No license, express or implied, by estoppel or otherwise, to any intellectual property rights is granted by this document or by any conduct of ROCKWOOL.



Pencoed, Bridgend,  
South Wales CF35 6NY  
t: 01656 868490  
technical.solutions@rockwool.co.uk

Title: Timber Frame Party Wall with FLEXI	
Scale: N.T.S.	Date: May 2021
Drawing Reference: RWSD-GEN-1013	Revision 1