

Masonry outer leaf
(Typical 103mm brickwork)
(By Others)

Calcium silicate sheathing board with
breather membrane to cavity face
(By Others)

Secure bracket with metal fixings
suitable for sheathing board

Vertical DPC to be installed between
outer leaf and Firestop Slab

ROCKWOOL SP Firestop Slab
SP60, SP120 and SP Plus sized to suit
required fire rating and cavity width
Refer to product brochure

SP/S, SP/L or SP/XL Bracket to suit
cavity width and Minimum 75% Bracket
penetration in to Firestop Slab

Internal lining and finishes
(By Others)

Vapour control layer

Steel frame to suit structural
requirements (By Others) with
ROCKWOOL
NyRock® Frame Slab 032
fitted between studs

Typical fire rated wall
junction - 30 or 60mins as
required by buiding design
(By Others)

Internal lining and finishes
(By Others)

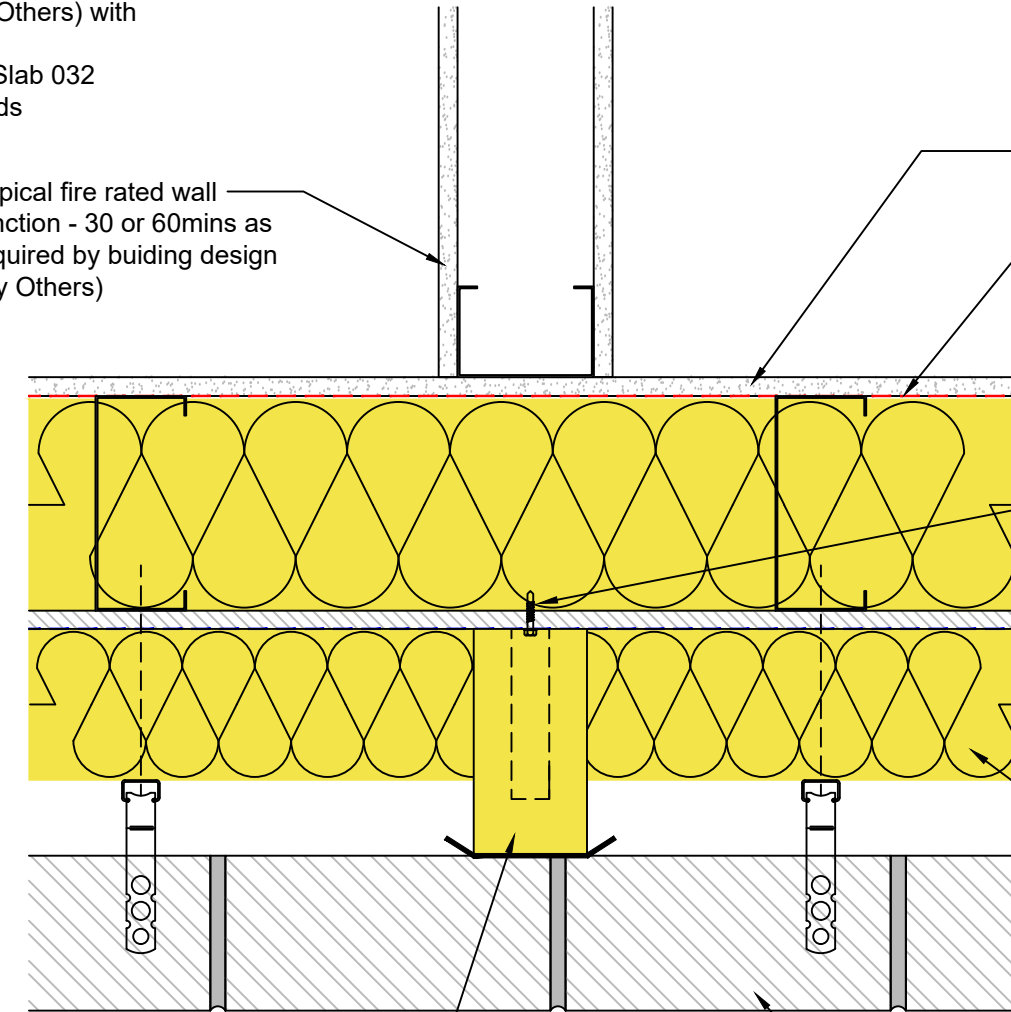
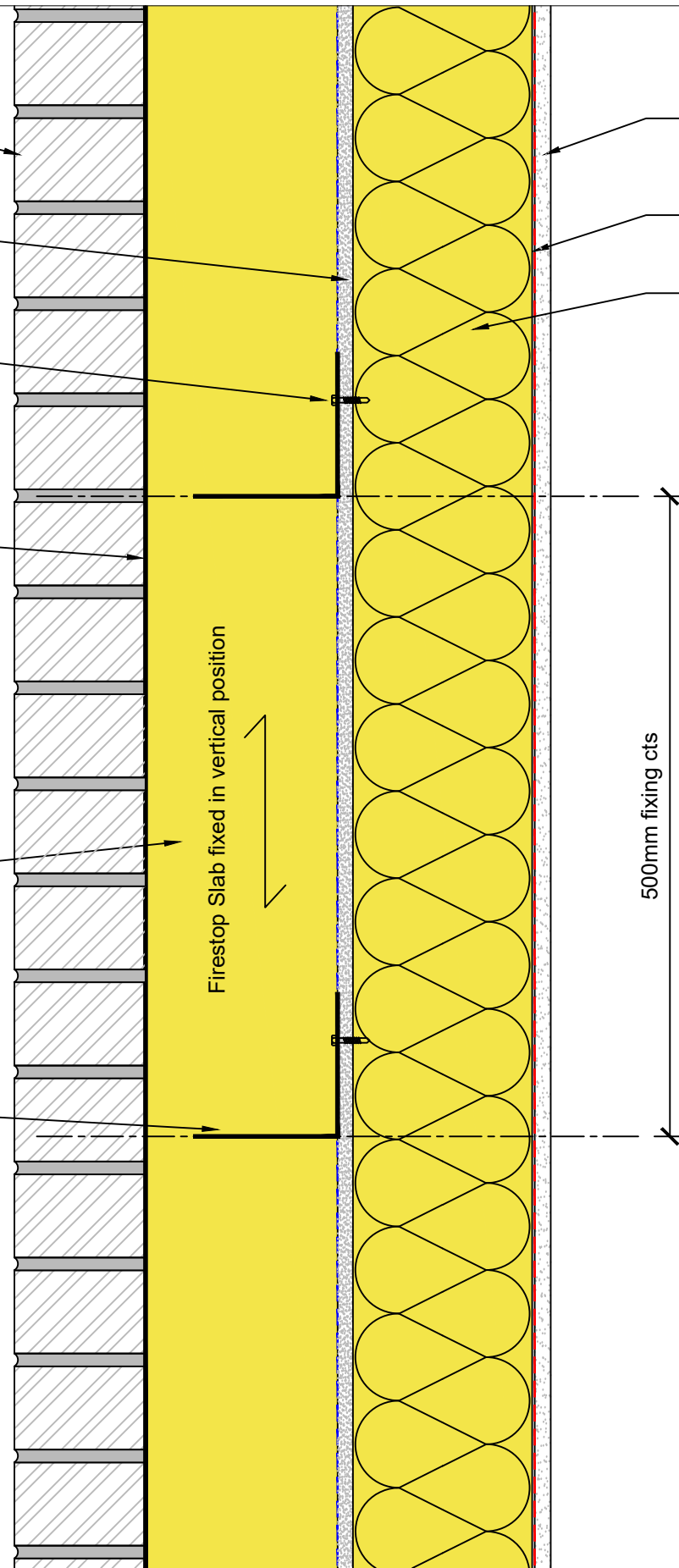
Vapour control layer

Secure bracket with
metal fixings suitable
for sheathing board

ROCKWOOL
NyRock®
Rainscreen 032

ROCKWOOL SP Firestop Slab
SP60, SP120 and SP Plus sized to suit
required fire rating and cavity width
Refer to product brochure
Vertical DPC to be installed between
outer leaf and Firestop Slab

Masonry outer leaf
(Typical 103mm brickwork)
(By Others)



Please refer to relevant ROCKWOOL product data sheet for further detail / specification / performance

This CAD Drawing is for illustration purposes only and shall not form part of any contract with ROCKWOOL or hold any contractual force.

Usage of the information remains under the sole responsibility of the purchaser and/or use

ROCKWOOL makes no warranty, representation or guarantee regarding the information contained in the CAD Drawing, the suitability of the products for any particular purposes or the continuing production of any product. To the maximum extent permitted by applicable law, ROCKWOOL disclaims (i) any and all liability arising out of the CAD drawing, the application, use of any product, misuse or inability to use the product (ii) any and all liability, including without limitation special, consequential or incidental damages, and (iii) any and all liability of any nature resulting from the use or reliance upon the information contained in this CAD Drawing. No express or implied warranties are given other than those implied by law.

Information contained in this CAD Drawing is up-to-date as at the date of issue. As ROCKWOOL Limited cannot control or anticipate the conditions under which the information contained in this CAD Drawing may be used, each user should review the information in specific context of the planned use and must obtain approval by Building Control and/or the overseeing body for the project, who are ultimately responsible for approving the correct application/specification.

No license, express or implied, by estoppel or otherwise, to any intellectual property rights is granted by this document or by any conduct of ROCKWOOL



Pencoed, Bridgend,
South Wales CF35 6NY
t: 01656 868490
technical.solutions@rockwool.co.uk

Title: NyRock® Frame Slab 032 Cavity Wall with NyRock® Rainscreen 032 and SP Firestop Slab (Vertical)	
Scale: N.T.S.	Date: May 2022
Drawing Reference: RWSD-GEN-1111	Revision 1