



FirePro® Fire Barrier Slab

Preventing the spread of fire and inhibiting the passage of smoke in concealed spaces

ROCKWOOL Fire Barrier Slab is a high density stone wool slab developed to prevent the spread of flames through concealed spaces, while also inhibiting the transfer of heat and smoke.

- Butt-jointed friction-fit installation
- No fixings, fasteners or angles required
- Suitable for closing voids of up to 1m in height and 20m in length
- Provides airborne sound reduction
- Service penetration data available
- Fire resistance of up to 4 hours integrity
- LUL approved in combination with ROCKWOOL LUL Intumescent Sealant



FirePro Fire Barrier Slab



APPLICATIONS

- Head of wall
- Concealed voids
- Service penetrations

FirePro Fire Barrier Slab

PERFORMANCE

Fire performance

Achieves 240min integrity, 60 min insulation without service penetrations. Where service penetrations are present Fire Barrier Slab can achieve 90min integrity, 60min insulation dependent on service penetration type. For further information of specific service penetration details please contact ROCKWOOL Technical Support.

Acoustic performance

ROCKWOOL Fire Barrier Slab has been tested in accordance with BS EN ISO 10140-2 achieving R_w 23dB. Test report reference C/23667/T01.

PRODUCT INFORMATION

Property	Description
Length	1000mm
Width	666mm
Thickness	100mm

STANDARDS AND APPROVALS

Certificate
Fire Barrier Slab has been independently tested and assessed to BS 476: Part 20 and Part 22 by accredited laboratories.
Third-party approved for performance and quality by the Loss Prevention Council Certification board (LPCB) and are listed on 'RedBookLive', certificate number 022c/02.
The product has been authorised for use in LUL surface and sub-surface premises when installed in accordance with this data sheet - please refer to the LUL Approved Product Register website www.LU-apr.co.uk for specific details – LUL ref: 2231.



FirePro Fire Barrier Slab

INSTALLATION

1. Fire Barrier Slab should be cut to the appropriate height and friction fitted within the opening.
2. ROCKWOOL Acoustic Intumescent Sealant or ROCKWOOL LUL Intumescent Sealant should then be applied to both the butt joints and perimeter of the barrier seal.

Service penetrations

ROCKWOOL Fire Barrier Slab can be penetrated by steel pipes of ≤ 33 mm external diameters and steel cable trays of $\leq 305\text{mm} \times 50\text{mm}$.

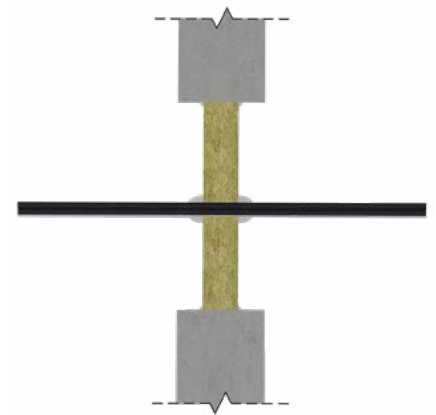
Penetrating services must be independently supported by a maximum of 150mm from the face of the slabs.

Handling

ROCKWOOL Fire Barrier Slab is easy to handle and cut to shape. The product should be stored indoors or under a weatherproof covering.

Maintenance

Once installed, ROCKWOOL Fire Barrier Slab should require no maintenance. It should be ensured during routine inspections that the product has not been damaged or disturbed.



SPECIFICATION CLAUSES

ROCKWOOL Fire Barrier Slab is associated with the following NBS clauses:

K10 Gypsum board dry linings/partitions/ceilings

530 Cavity fire barriers within partitions/wall linings

545 Cavity fire barriers within suspended ceilings

K40 Demountable suspended ceilings

287 Cavity Barriers

425 Installing cavity barriers

431 Installing sound barriers

P10 Sundry insulation/proofing work

410 Flexible cavity barriers

430 Wired mineral wool small cavity barriers

440 Fire protection

FirePro Fire Barrier Slab

BUILDING SAFETY AND PRODUCT USE

LEGAL NOTICES

General safety requirements – Building Safety Act 2022

ROCKWOOL Limited is committed to supporting specifiers, resellers and users of ROCKWOOL products for the full life cycle of the product to comply with the obligations and responsibilities set out in the Building Safety Act 2022. With regard to the general safety requirements of the Act, ROCKWOOL Limited cannot control or foresee every situation where its products might be used. We therefore strongly advise that specifiers, resellers and users contact us where use of ROCKWOOL products is contemplated in applications different from those explicitly described in the latest, relevant ROCKWOOL product datasheets; especially in applications that can be reasonably foreseen as critical to safety.

ROCKWOOL Limited reserves the right to amend the specification of its products without notice. Changes to the ROCKWOOL manufacturing process, or to pertinent regulations, may be reflected in changes to tested and certified product performance. Whilst ROCKWOOL Limited endeavours to keep its publications up to date, readers will appreciate that between publications there may be pertinent changes in the law or other developments affecting the accuracy of the information contained in our publications.

ROCKWOOL Limited does not accept responsibility for the consequences of using (including testing or certifying) its products in applications different from those explicitly described in the relevant ROCKWOOL product datasheets. Expert advice should be sought, and ROCKWOOL Limited should be contacted, where such different use is contemplated, or where the extent of any use described by ROCKWOOL Limited is in doubt.

The ROCKWOOL Trademark

ROCKWOOL® - our trademark

The ROCKWOOL trademark was initially registered in Denmark as a logo mark back in 1936. In 1937, it was accompanied with a word mark registration; a registration which is now extended to more than 60 countries around the world.

The ROCKWOOL trademark is one of the most important assets of the ROCKWOOL Group, and is therefore well-protected and defended by ROCKWOOL throughout the world.

If you require permission to use the ROCKWOOL logo for your business, advertising or promotion, you must apply for a Trade Mark Usage Agreement.

To apply, write to:
marketcom@rockwool.com

Trademarks

Registered trademarks of the ROCKWOOL Group include but are not limited to:

ROCKWOOL®, RockClose®, RainScreen Duo Slab®, HardRock®, RockFloor®, Flexi®, RockFall®, FirePro®, DuctRock®, BeamClad®, NyRock®

© ROCKWOOL 2023.
All rights reserved.

Photography and illustrations

The product illustrations are the property of ROCKWOOL Limited and have been created for indicative purposes only.

Unless indicated below, the photography and illustrations used in this guide are the property of ROCKWOOL Limited. We reserve all rights to the usage of these images.

If you require permission to use ROCKWOOL images, you must apply for a Usage Agreement.

To apply, write to:
marketcom@rockwool.com

HEALTH & SAFETY

A Material Safety Data Sheet is available and can be downloaded from www.rockwool.com/uk to assist in the preparation of risk assessments, as required by the Control of Substances Hazardous to Health Regulations (COSHH)

FirePro Fire Barrier Slab

ROCKWOOL stone wool - safe to install and live alongside

There are no hazardous classifications associated with stone wool insulation manufactured by ROCKWOOL-UK according to EU REACH and UK REACH regulations on health and the environment.

ROCKWOOL safe use instruction sheets and material safety data sheets (where applicable) can be downloaded [here](#).



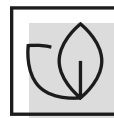
Sustainability

ROCKWOOL products are used to enrich modern living, creating safer, healthier and more climate-resilient communities.

We transform abundant, natural volcanic rock into stone wool insulation products that are used to reduce energy demand, lower fuel bills and help address society's climate change challenges.

ROCKWOOL stone wool insulation is recyclable and can be transformed into new ROCKWOOL products. Please contact us for details of how we can work together to recycle waste ROCKWOOL stone wool material that may be generated during on-site installation.

Our annual sustainability reports, which set out progress against our sustainability goals, and further details of the positive impacts of using our products can be found on our website.



Environment

ROCKWOOL takes a fact-based, auditable approach to documenting our progress in maximising our products' positive impact and minimising the effect our operations have on the environment, backed by third-party references and methodologies. Further details can be found online in our annual sustainability report.

Our high-tech production process uses filters, pre-heaters, after-burners and other cleaning and collection systems that help to reduce the effects of our manufacturing operations on the environment.

ROCKWOOL stone wool insulation does not contain (and has never contained) gases that have ozone depletion potential (ODP) or global warming potential (GWP).

