

Republic of Ireland Builders' Merchants Price List March 2024

Prices effective from 1st March 2024



Safer



Warmer



Quieter



THERMAL

SOUND





Placing Orders

Customer Support are on call to help you place an order or get information on your current order.

A delivery date will be advised following the receipt of a formal order via an order confirmation.

Delivery times will be communicated following receipt of an order confirmation.

If your order is made up of a mixture of In Stock and Made to Order products from the commercial price list, the order will be delivered in line with the longest lead time.

Please note, the minimum order quantity is two pallets, with full pallet quantities only and no mixed pallets.

Contact Us

Do you have technical or application related questions? **We are here to help you!**

Our in-house Technical team are available to provide expert advice on any project or product enquiries that you or your customer may have.

We also have a wide range of tools, documents and guides to make your customers project as simple as possible - visit rockwool.com/uk/tools for further information.



Customer Support

Please place your order via:

Email: customersupportcentre@rockwool.com

Phone: 00 44 1656 868 400

Service Hours:

Monday - Thursday: 6.30am - 6.30pm

Friday: 6.30am - 5.30pm

Technical Solutions

For all technical product and application queries please contact:

Email: technical.solutions@rockwool.com

Phone: 00 44 1656 868 490

Service Hours:

Monday - Thursday: 9am - 5pm

Friday: 9am - 4pm

Let's work together!

Would you like help with your website, a special project or bespoke POS requirement?

ROCKWOOL can help! Get in touch with your Local Sales Specialist to find out more about integrated marketing campaigns: www.rockwool.com/uk/contact-us/#SpecificationandSalesSupport

Whilst every effort has been made to ensure the accuracy of this price list and its contents, ROCKWOOL reserves the right to alter in the event of any errors or omissions. All prices listed are exclusive of VAT. E&OE.

For our full Terms and Conditions please visit rockwool.com/uk/tandcs



Delivery Details

Amending Orders

You can amend an order free of charge for stocked items up until 11.00am, 96 hours before dispatch, or additional charges will apply.

Once ordered, if manufacturing has begun, made to order products cannot be cancelled or amended and the full costs will be applied.

Cancelled Deliveries

Stocked Items

- For products which have not been loaded, no charges will apply
- For products which have been loaded but have not left the site, a minimum handling charge of €110 will apply
- For products which are in transit for delivery, handling and transport costs will apply and will be confirmed by ROCKWOOL Customer Support Centre at the time of cancellation

Made to Order Items

- For products which have not been manufactured, no charges will apply
- For products which have been manufactured, the full order value will be charged
- For products which have been manufactured and are in transit for delivery, the full order value plus handling and transport costs will apply

Postponed Deliveries

Stocked Items

The storage charge will be €110 per trailer per day.

Made to Order Items

Storage charges will apply for Made to Order product deliveries that are postponed after the product has been manufactured. The storage charge will be €110 per trailer per day.

Postponed Flat Bed Deliveries

Deliveries requested on flat bed trailers which are postponed within 48 hours of the agreed delivery date will be subject to postponement charges. Storage charges will apply.

Refused Deliveries

Deliveries which are refused for any reason (e.g. windage, weather conditions etc) will incur costs which will include the delivery and return charges and ROCKWOOL handling fees.

Redirected Deliveries

Deliveries that are redirected from the agreed delivery destination will incur charges. ROCKWOOL Customer Support Centre will confirm these costs at the time of request.

Split Deliveries

We offer limited split deliveries on request where possible.

- Up to 20 miles between deliveries, from €80
- Other distances POA

Delayed Off-Loading

Waiting time charges at €80 per hour pro-rata will apply if the delivery vehicle is not off-loaded within two hours of the requested delivery time.





Choose ROCKWOOL non-combustible insulation

This means they do not burn, nor contribute to fire growth.



The Euroclass system

The Euroclass Reaction to Fire system classifies building products in accordance with BS EN 13501-1. Using a product's Euroclass rating as guidance is the only way to determine a product's full Reaction to Fire performance. Products classified A1 or A2 are considered non-combustible and those classified B - F are considered combustible.

Products are classified from A1-F:

Euroclass	Combustibility
A1 A2-s1, d0	Non-combustible
B C D E F NPD	Combustible: Will burn and may char or flame

Important points to remember...

- Class 0 is not a measure of a product's combustibility, simply surface spread of flame. Many products achieve Class 0 but are combustible.
- To be sure of a product's Euroclass rating, simply check its Declaration of Performance (DoP).
- All ROCKWOOL DoPs are available online at:
www.rockwool.com/uk/dop

* A1 and A2 classified products are tested in accordance with the non-combustibility test EN ISO 1182 to identify that they will not, or significantly not, contribute to a fire.

Welcome to homes with peace of mind built in

ROCKWOOL insulation is non-combustible. It's used in buildings around the world to contain fire and prevent its spread.

ROCKWOOL products can make the difference between a fire in a building and a building on fire.



Order online with Rockcommerce

Rockcommerce is a brand new online platform for placing orders and managing purchases, which means it has never been easier to maintain your ROCKWOOL® product stocks.



Easy to use Our online product catalogue makes finding and purchasing the right products easier than ever, thanks to the innovative user-friendly interface. Plus, if you know which products you need, you can make use of our order templates and excel documents to streamline the process even further.

Faster order placement Rockcommerce operates through a live link to ROCKWOOL, meaning your orders are automatically and immediately placed on our system. Your personalised terms are shown to avoid any delays or pricing queries, and our built-in load optimiser tool helps guide you towards the optimal purchasing choice for your branch.

Account management Access historic and open invoices and manage your account settings all online. You can administer your team's access and spending limits, your branch delivery address book, and much more.

Want to learn more?

Speak to your local sales representative about getting on board with Rockcommerce.



Warmer

ROCKWOOL Trade Insulation Range

The ROCKWOOL Trade Insulation Range features thermal and sound insulation solutions for every part of the home.



Quieter

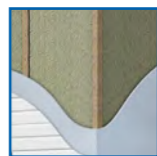
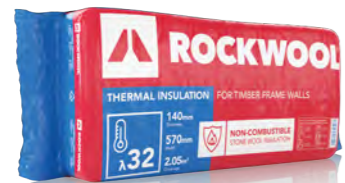
Recommend the right insulation for your customers' project



THERMAL INSULATION



SOUND INSULATION



External Walls
Thermal Timber Frame Slab



Lofts and Ceilings
Thermal Loft Roll



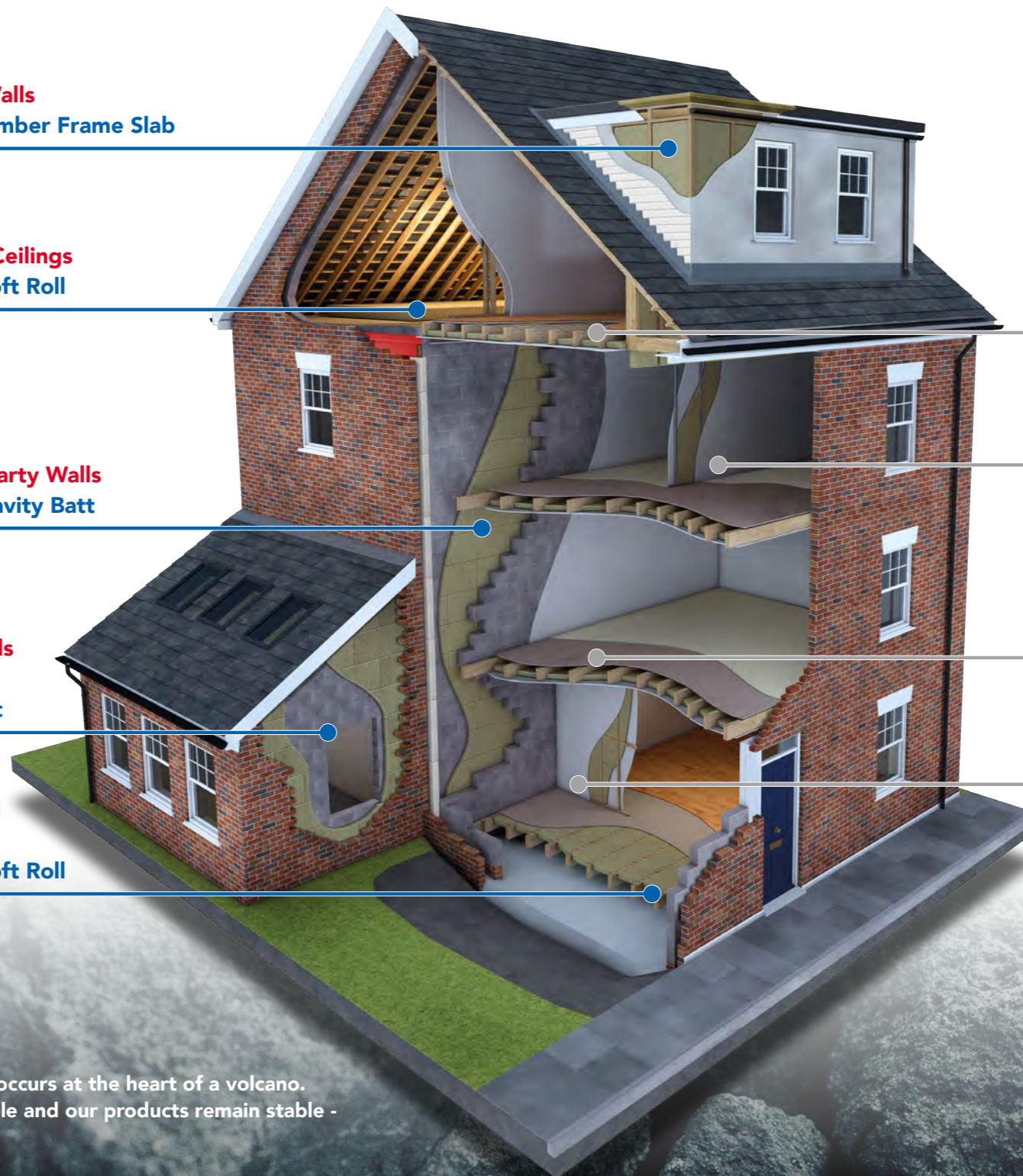
Masonry Party Walls
Thermal Cavity Batt



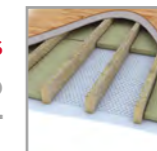
Masonry Cavity Walls
Thermal Cavity Batt



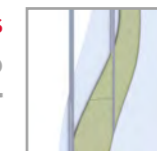
Suspended Floors
Thermal Loft Roll



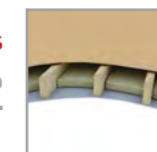
One Hour Fire Floors
Sound Slab



Metal Stud Walls
Sound Slab



Intermediate Floors
Sound Slab



Timber Stud Walls
Sound Slab



Did you know?

Stone wool is produced by replicating the process that occurs at the heart of a volcano. That means that stone wool is inherently non-combustible and our products remain stable - even at extremely high temperatures.

Made from stone

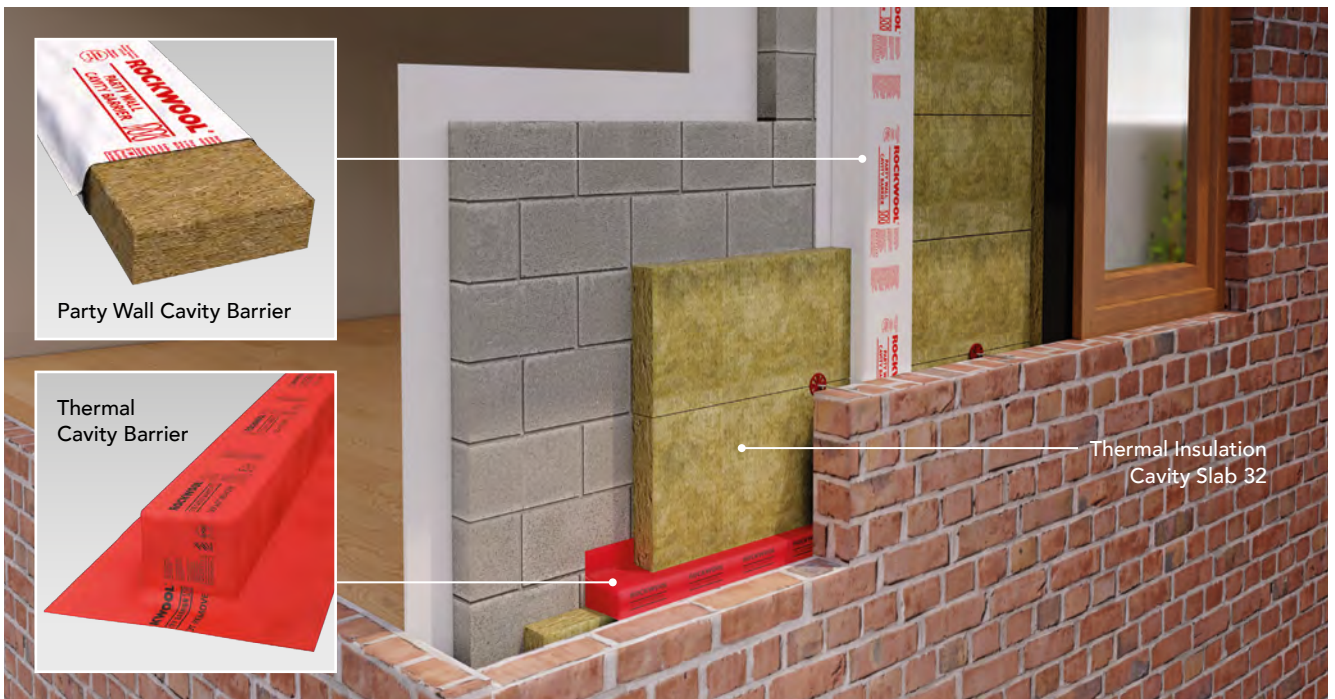


Thermal Insulation

ROCKWOOL Thermal Insulation is designed for use in the external envelope of the building; from ground floors, through to masonry or timber framed external walls, up to pitched roofs and horizontal loft spaces.

It's been developed to give temperature control both in the cool winters, as well as hotter summers, meaning homeowners can live in comfort all year-round and keep their heating bills low.

ROCKWOOL stone wool is also a non-combustible material, so in the event of a fire it can provide extra time for occupants to escape and emergency services to contain the fire, minimising damage to the property and contents.



Thermal Cavity Barriers

Product Code	To Suit Cavity (mm)	Thickness (mm)	Width (mm)	Length (mm)	Pieces/ Bag	LM/ Bag	Bags/ Pallet	LM/ Pallet	Made to Order	MOQ (Pallet)	List Price/ Linear m
318157	50-55	65	65	1200	31	37.20	6	223.20	•	1	€3.89
318172	91-100	110	110	1200	14	16.80	6	100.80	•	1	€9.62
318173	121-130	140	140	1200	10	12.00	5	60.00	•	1	€13.82

Party Wall Cavity Barriers

Product Code	To Suit Cavity (mm)	Thickness (mm)	Width (mm)	Length (mm)	Pieces/ Bag	LM/ Bag	Bags/ Pallet	LM/ Pallet	Made to Order	MOQ (Pallet)	List Price/ Linear m
318187	50-55	65	200	1200	12	14.40	6	86.4	•	1	€25.41
318195	91-100	110	200	1200	7	8.40	6	50.40	•	1	€37.18
164650	121-130	140	200	1200	7	8.40	5	42.00	•	1	€42.36

Other cavity fire stopping products are available, learn more about our other cavity solutions at: www.rockwool.com/uk/products-and-applications/product-overview/cavity-solutions/



Cavity Wall



Lofts



Timber Frame Wall

Thermal Insulation

The Thermal Insulation Range offers a 100mm full fill masonry cavity batt as well as a Timber Frame Slab at 140mm thickness, featuring a 570mm width allowing for a tight friction fit offering maximum performance without the need for cutting.

Rounding out the range is our TwinRoll loft insulation, which is pre-split into two 100mm layers for quick and easy installation in between and over the rafters to give the required 300mm coverage.

Application	Cavity Wall		Timber Frame Wall	Loft Insulation
Product	100mm Cavity Batt 37	100mm Cavity Slab 32	140mm Frame Slab 32	100mm Roll 44
Product Code	180898	323846	328253	180900
Dimensions (mm)	455 x 1200	455 x 1200	570 x 1200	1200 x 2750
List Price/Pack	€65.63	€72.22	€90.08	€109.43
List Price/m ²	€20.01	€33.13	€43.94	€16.58
Pieces per Pack	6	4	3	2
Area per Pack (m ²)	3.28	2.18	2.05	6.60
Packs per Pallet:	20	12	9	15
Area per Pallet (m ²)	65.52	26.21	18.47	99
Lambda Value (λ)	0.037 W/mK	0.032 W/mK	0.032 W/mK	0.044 W/mK
Euroclass Fire Rating	A1	A1	A1	A1



Sound Insulation

ROCKWOOL Sound Slab is a stone wool insulation product featuring a non-directional fibre orientation and higher density, meaning it traps sound waves and dampens vibrations. Ideal for use in residential applications such as home offices, bedrooms, and TV and gaming rooms.

Sound slab is available in a range of thicknesses and widths to suit typical timber and steel stud partitions, separating walls as well as internal and separating floors.

Euroclass A1 non-combustible and recipient of the QuietMark™ certification, ROCKWOOL Sound Slab is proven to keep buildings both safe and sound.



Benefits:

- Outstanding noise reduction - Quiet Mark™ approved
- Flexi® Edge for perfect friction fitting without leaving gaps or cracks
- Compatible with various Robust Details constructions*
- Quick and easy to install with minimal waste

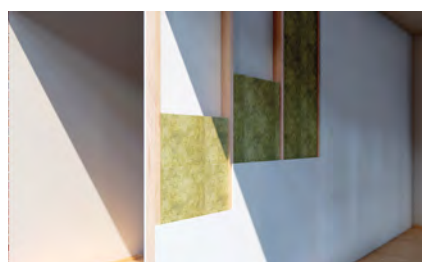


*Refer to the Robust Details Handbook for further details

Made from natural stone, ROCKWOOL insulation is a sustainable material choice and can also be recycled to make new products.



Quieter



Partition Wall



Internal Floor



Separating Floor

Sound Insulation

The Sound Range offers slabs with the Flexi® Edge for fast fitting in internal walls and floors, to protect against both noise and fire.

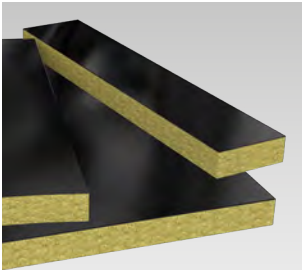
The range includes a 50mm slab for walls and a 100mm slab for floors, both available at either 400mm or 600mm widths. For high performance acoustic wall constructions, a 70mm x 600mm slab is also available.

SKU	50mm Slab	50mm Slab (400mm)	70mm Slab	100mm Slab	100mm Slab (400mm)
Product Code	274413	278709	180887	180889	180891
Dimensions (mm)	600 x 1200	400 x 1200	600 x 1200	600 x 1200	400 x 1200
List Price/Pack	€123.21	€82.14	€128.45	€116.99	€77.96
List Price/m ²	€14.26	€14.26	€22.30	€27.08	€27.07
Pieces per Pack	12	12	8	6	6
Area per Pack (m ²)	8.64	5.76	5.76	4.32	2.88
Packs per Pallet:	12	20	12	15	25
Area per Pallet (m ²)	103.68	115.20	69.12	64.80	72.00
Lambda Value (λ)	0.038 W/mK	0.038 W/mK	0.038 W/mK	0.038 W/mK	0.038 W/mK
Euroclass Fire Rating	A1	A1	A1	A1	A1



Products Available for Up-Sell Opportunities

ROCKWOOL also produce a wide range of additional in stock products that are not listed within this price list. Fire Protection, Cladding Solutions, HVAC and Flat Roofing products are all available to merchants.



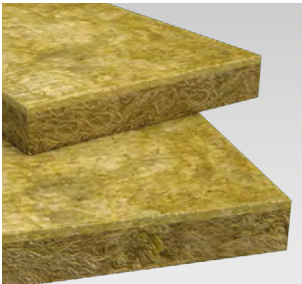
FirePro® SP
FireStop EN



Thermal
Cavity Barriers

Fire Protection

In the event of a fire, non-combustible insulation slows the spread of the flames. ROCKWOOL stone wool also helps protect the building's load-bearing structure, protecting lives and investment.



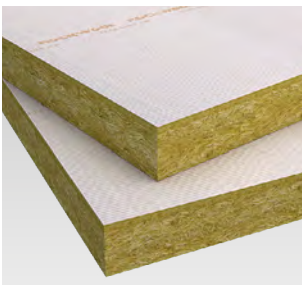
RainScreen
Duo Slab®



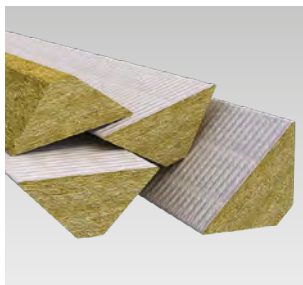
SP FireStop
OSCB

Cladding Solutions

ROCKWOOL cladding solutions offer lightweight thermal, fire and acoustic cladding insulation suitable for external wall and roof applications.



HardRock®
Multi-Fix (DD)



HardRock®
Multi-Fix Angle Fillet

Flat Roofing

Modern flat roof insulation systems are more than just structures that protect buildings and their occupants from external elements.

ROCKWOOL flat roof insulation will minimise the escape of heat and as ROCKWOOL insulation is made of stone, it will also act as a fire barrier and reduce unwanted noise.

For more information about available products please contact your ROCKWOOL Sales Specialist.





Marketing Support

To help drive sales and customer engagement at your branch, ROCKWOOL has a comprehensive range of POS and literature designed to support and encourage sales in your branch. The ROCKWOOL Experience truck is also available to demonstrate the unique properties of ROCKWOOL stone wool Insulation.

Listed below are our most popular items, simply place your order with your Local Sales Specialist.

In Store



Shelf Edge Labels

Dimensions:
2650mm x 95mm
Description:
3mm magnetic
PVC labels



Rack End Poster

Dimensions:
594mm x 841mm
Description:
3mm Foamex board



Leaflet & Dispenser

Dimensions:
Leaflet: 85mm x 179mm
Dispenser: 215mm x 240mm
Description:
150 gsm leaflet;
twist-lock dispenser



Counter Poster

Dimensions:
420mm x 594mm
Description:
A2 300gsm
gloss laminated



Bus Stops

Dimensions:
400mm x 145mm
Description:
1mm Polypro with
hinged hanger



Shelf Edge Wobblers

Dimensions:
120mm x 120mm
(front face)
Description:
Flexible PVC

Display Units



Point-of-Sale Display Unit

Dimensions:
Thermal Roll:
730mm x 650mm x 1700mm
Sound Slab:
730mm x 495mm x 1700mm
Description:
EB Flute Product Display



Branding Cubes

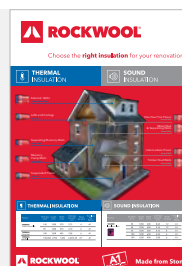
Dimensions:
500mm x 500mm x 1520mm
Description:
EB Flute Branding Display

External Branding



Outdoor Banner

Dimensions:
3m x 1m
Description:
440gsm PVC + cable ties



Outdoor Poster

Dimensions:
594mm x 841mm
Description:
3mm Foamex Board

Made for your trades

The ROCKWOOL Trade Application Guide is packed with everything your customers will need to choose the right product for the job.

- Find the latest product information and select what to use where for improved thermal and acoustic performance
- Check building regulations for safe, warm, quiet and compliant homes
- See time-saving tools available from ROCKWOOL

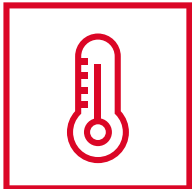
Order copies from your
ROCKWOOL Sales Specialist



Why use ROCKWOOL?

We know reputation is everything. That's why for over 40 years, we have been manufacturing stone wool insulation in the UK, helping tradespeople build safer, warmer, and quieter homes for their customers, and a great reputation for their business.

The power of stone is one of the many reasons why ROCKWOOL is trusted by construction professionals. Our insulation is made from lava deposits of volcanic rock. This gives ROCKWOOL products a wealth of hardworking properties.



Warmer

Our stone wool insulation traps air in its structure making it incredibly effective at creating an optimal temperature in the home, whatever the weather is doing outside. ROCKWOOL insulation keeps houses warm in the winter and cool in the summer, so homes are always a comfortable place to be.



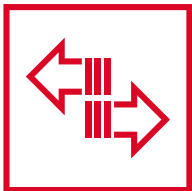
Safer

As ROCKWOOL insulation is made from volcanic rock, it is naturally non-combustible and capable of withstanding temperatures in excess of 1000°C. Our insulation contains fire and prevents its spread, and at the same time, doesn't contribute to the emission of significant quantities of toxic smoke.



Quieter

Because our stone wool insulation has a high density, it traps sound waves and prevents them from travelling through the material: whether it's in a wall, roof, or floor.



Easier

We've designed our products with ease and speed in mind. All rolls and slabs in our Trade Insulation Range are quick and easy to cut, shape and fit, plus handy features such as pre-split rolls and Flexi® Edge make installation simple.



Longer

The power of stone gives ROCKWOOL insulation a unique toughness that lasts. It's resistant to sagging and our insulation doesn't attract water or encourage the growth of mould, fungi or bacteria.



LEGAL NOTICES

General safety requirements – Building Safety Act 2022

ROCKWOOL Limited is committed to supporting specifiers, resellers and users of ROCKWOOL products for the full life cycle of the product to comply with the obligations and responsibilities set out in the Building Safety Act 2022. With regard to the general safety requirements of the Act, ROCKWOOL Limited cannot control or foresee every situation where its products might be used. We therefore strongly advise that specifiers, resellers and users contact us where use of ROCKWOOL products is contemplated in applications different from those explicitly described in the latest, relevant ROCKWOOL product datasheets; especially in applications that can be reasonably foreseen as critical to safety.

ROCKWOOL Limited reserves the right to amend the specification of its products without notice. Changes to the ROCKWOOL manufacturing process, or to pertinent regulations, may be reflected in changes to tested and certified product performance. Whilst ROCKWOOL Limited endeavours to keep its publications up to date, readers will appreciate that between publications there may be pertinent changes in the law or other developments affecting the accuracy of the information contained in our publications.

ROCKWOOL Limited does not accept responsibility for the consequences of using (including testing or certifying) its products in applications different from those explicitly described in the relevant ROCKWOOL product datasheets. Expert advice should be sought, and ROCKWOOL Limited should be contacted, where such different use is contemplated, or where the extent of any use described by ROCKWOOL Limited is in doubt.

The ROCKWOOL Trademark

ROCKWOOL® - our trademark

The ROCKWOOL trademark was initially registered in Denmark as a logo mark back in 1936. In 1937, it was accompanied with a word mark registration; a registration which is now extended to more than 60 countries around the world.

The ROCKWOOL trademark is one of the most important assets of the ROCKWOOL Group, and is therefore well-protected and defended by ROCKWOOL throughout the world.

If you require permission to use the ROCKWOOL logo for your business, advertising or promotion, you must apply for a Trade Mark Usage Agreement.

To apply, write to:
marketcom@rockwool.com

Trademarks

Registered trademarks of the ROCKWOOL Group include but are not limited to:

ROCKWOOL®, RockClose®, RainScreen Duo Slab®, HardRock®, RockFloor® Flexi®, RockFall®, FirePro®, DuctRock®, BeamClad®, NyRock®

© ROCKWOOL 2024.
All rights reserved.

Photography and illustrations

The product illustrations are the property of ROCKWOOL Limited and have been created for indicative purposes only.

Unless indicated below, the photography and illustrations used in this guide are the property of ROCKWOOL Limited. We reserve all rights to the usage of these images.

If you require permission to use ROCKWOOL images, you must apply for a Usage Agreement.

To apply, write to:
marketcom@rockwool.com

HEALTH & SAFETY

A Material Safety Data Sheet is available and can be downloaded from www.rockwool.com/uk to assist in the preparation of risk assessments, as required by the Control of Substances Hazardous to Health Regulations (COSHH).

ROCKWOOL Limited

Pencoed
Bridgend
CF35 6NY

00 44 1656 868 400
info@rockwool.co.uk
www.rockwool.com/uk

March 2024 Version 6.00

